

AGE 14+



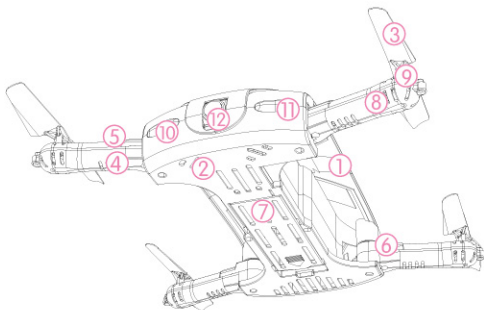
ELFIE

THE WORLD'S SMALLEST FOLDABLE DRONE

*Please read this manual carefully before operation and keep it properly for future reference.

KNOW YOUR ELFIE

With 2.4G frequency band for long remote control distance, Elfie allows multiple flights at the same time without any interference. User can control it to fly, roll, hover and take photos/videos with APP and WIFI connection on smart phone.



1.Up cover of enclosure

2.Down cover of enclosure

3.Propeller

4.Up cover of arms

5.Down cover of arms(A)

6.Down cover of arms(B)

7.Circuit board

8.Motor

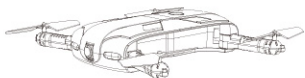
9.Gear

10.Flashing lights

11.Lampshade

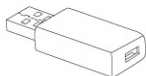
12.Camera

Accessories



ELFIE x1
(Battery Included)

Backup propellers x4



USB charger x1

User manual x1

Protective case x1

Note:

Please check the number of accessories carefully(as shown above).Please provide proof of purchase and contact the store for replacement if any missing parts.

PRE-FLIGHT PREPARATION

1. Select Flight Environment



Indoor flying: choose a wide place without barriers, pets and people.



Outdoor flying: Choose a sunny and windless day.



Please keep the drone in sight during the flight and keep it away from barriers, high-tension cables, trees and people.

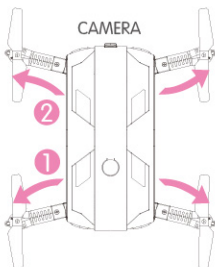


Do not fly in extreme environment, such as hotness, coldness, strong wind or heavy rain.

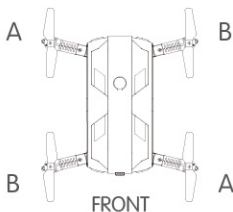
2.Unfold Crankshafts

Unfolding Sequence:

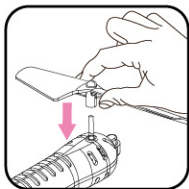
- ①Unfold the rear crankshafts.
 - ②Unfold the front crankshafts. (Near the camera)
- Fold the crankshafts in reverse order.



3.Propellers Installation



A corresponds to A
B corresponds to B

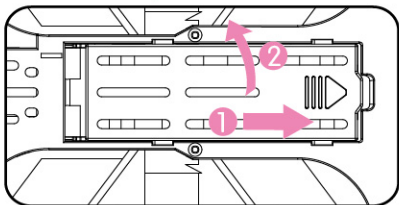


Press down the
propeller with the
crankshaft.

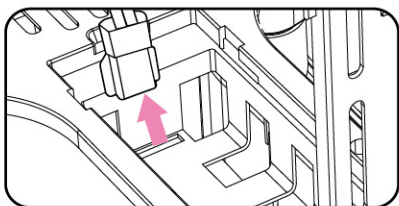
Note:

When installing or dismantling the propeller, please do not exert force on the propeller to avoid distortion.

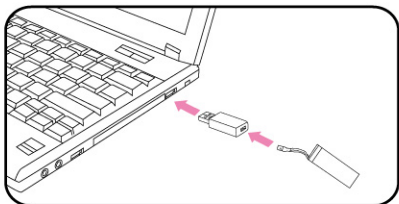
4.Lithium Battery Instruction



A.Open the battery cover at the bottom of the drone.



B.Unplug the power connector to remove the lithium battery.



C.Connect lithium battery and USB charging interface by USB charger.

Note:

LED lights on when charging, LED lights off when finish charging. Charging time is about 120 minutes.

⚠ Battery Instructions

- There is a certain risk when using lithium battery. It may cause fire, body injury or property loss. Users must be aware of the risks and take full responsibility of using battery improperly.
- If battery leakage occurs, please avoid contacting your eyes and skin with electrolyte. Once it happens, please wash your eyes with clean water and seek medical care immediately.
- Please remove the plug immediately if you sense any peculiar smell, noise or smog.

Battery Charging

- Please use the charger from original factory to ensure your safe usage.
- Do not charge dilatant or outworn battery.
- Do not over charge battery. Please unplug the charger once fully charged.
- Do not charge the battery next to inflammables, such as carpet, timber floor or wood furniture or on the surface of electro-conductive objects. Please always keep an eye on the battery when charging.
- Do not charge battery which not cool down yet.
- The charging temperature should be between 0°C to 40°C.

Battery Recycling

- Do not dispose the battery as daily rubbish. Please familiarize yourself with the local garbage disposal method and dispose it according to the special requirement.

KNOW YOUR REMOTE CONTROL APP

1.Wifi Connection

- ①.Use your phone to scan the QR code, download and install the control software: 'JJRC' . Android, Android(Google Play) and IOS are all supported.



Android



Android
(Google Play)

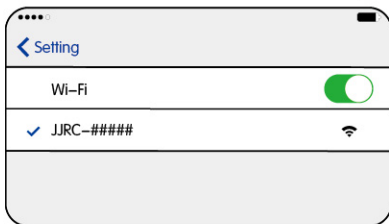


IOS

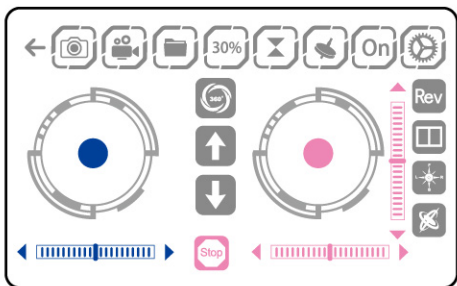


JJRC

- ②.Turn on the drone and the lights will flash; turn on your mobile phone to connect WIFI (JJRC-#####), as shown in figure.



2.APP Interface Instruction

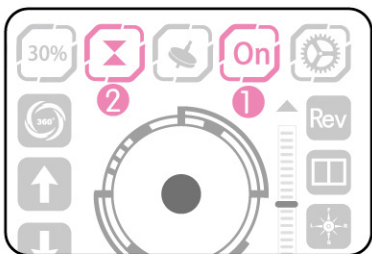


- | | | | |
|--|------------------------------------|--|---------------------------------|
| | Return | | Photo |
| | Video | | Document (Album/video) |
| | Speed Control:
30%/60%/100% | | Altitude Hold |
| | Gravity Sensor Control | | Show/Hide Steering Wheel |
| | More Settings | | 360° Flips&Rolls |
| | One-key Start | | One-key Landing |
| | Camera Reverse | | 3D Display |
| | Headless Mode | | One-key Reset |
| | Emergency Stop | | Left Joystick (throttle) |
| | Right Joystick (rudder) | | Forward/Backward
Fine-tuning |
| | Left/Right Side Fly
Fine-tuning | | |
| | Left/Right Rotation
Fine-tuning | | |

START YOUR FLIGHT

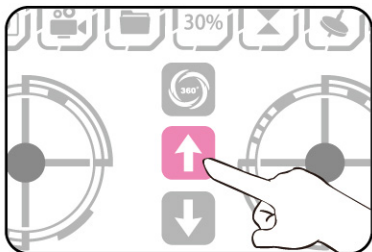
1.Remote Control Frequency Pairing

Click “ON” , then click “Altitude Hold” for remote control frequency pairing.



2.One–Key Start

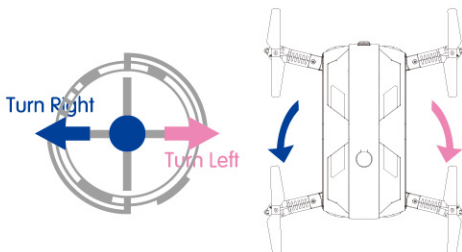
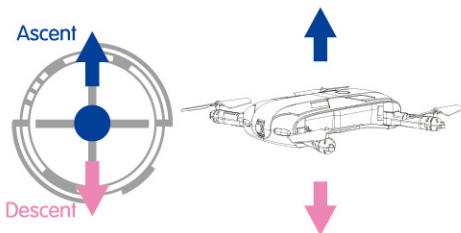
Click "One–key Start" to activate the motor and propellers.



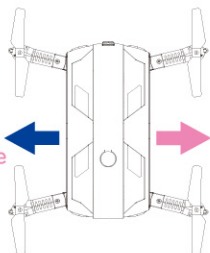
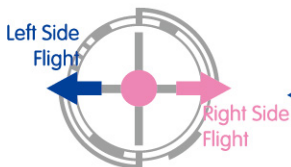
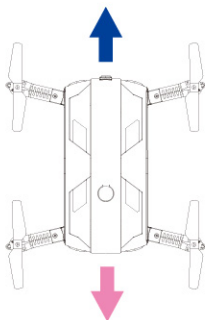
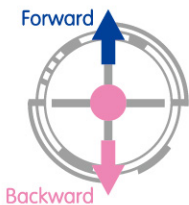
3.Basic Flight

Use the left joystick to control the flight altitude and turn left/right, and the right joystick to control the forward, backward, left and right side flight directions.

Left Joystick

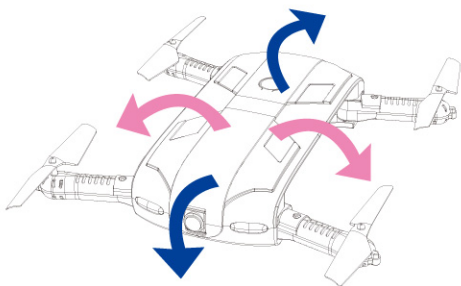
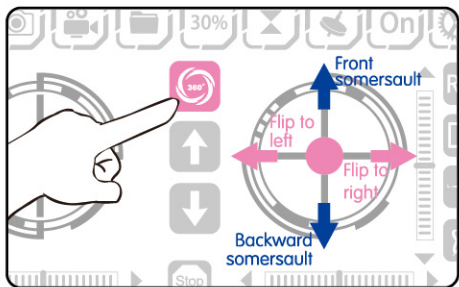


Right Joystick



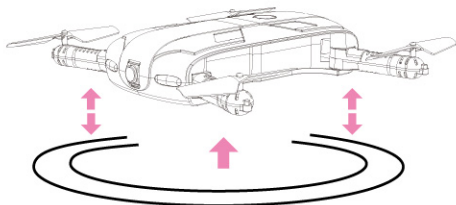
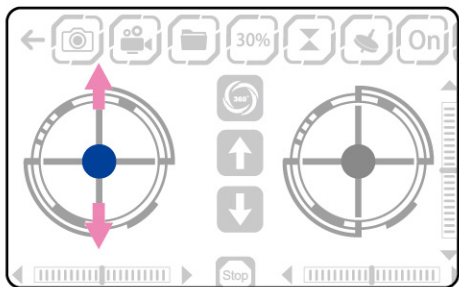
Flips&Rolls

When the drone is reaching more than 3 meters high, click “360° flips and rolls” and move the right joystick to a certain direction, the drone will rotate in that direction.



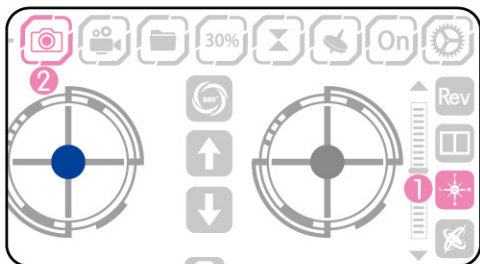
Hover

When you release the left joystick (throttle) after the ascent/descent action, the drone will hover at a certain height.



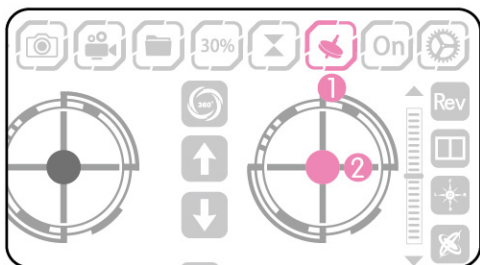
4.Take Selfies

In the Altitude hold mode, you can control the quadcopter to turn the camera back to itself, then click the camera button on the screen to take selfies.



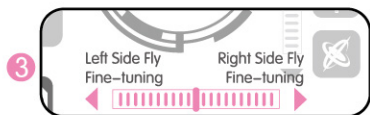
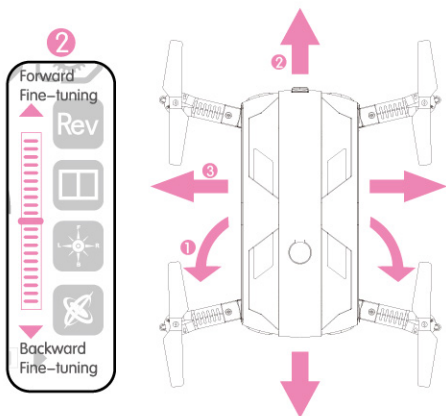
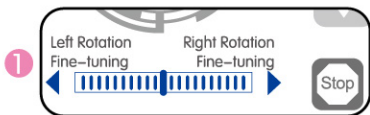
5.Gravity Sensor Control

Gravity Sensor Control: Click to enter Gravity Sensor Control, put your right hand thumb on the right joystick, and move the phone towards any direction for remote control.



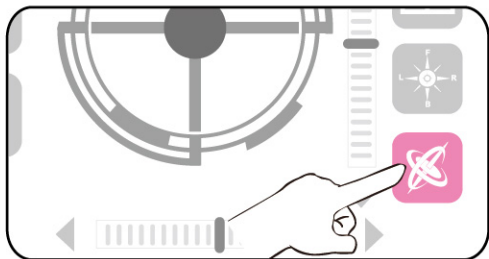
6. Fine-Tuning Function

When deviating from course, click "Fine-tuning" for calibration until the drone is back to normal.



7.One-Key Reset

When deviating from course due to crash, please control the drone back to a horizontal plane and click "One-key reset" for gyro calibration and take-off again.



Note:

Attention: When the quadcopter is within 30cm from the ground, it will be affected by the blade vortex made by itself and become unstable. This is "ground effect". The lighter the quadcopter is, the greater the effect will be.

FAQ

PROBLEMS	CAUSES	SOLUTIONS
Control failure	Not connect with the quadcopter battery.	Connect the quadcopter battery in right way.
	Too strong wind force.	Do not fly in windy days. The performance and the control of the quadcopter will be affected by the strong winds.
Fail to ascend	The rotation speed of main blades is too slow.	Push up the throttle joystick.
	The battery of the quadcopter is not fully charged.	Please full charge the quadcopter.
Landing too soon	The throttle stick is pulled down too fast.	Pull down the throttle stick slowly to perform a smooth landing.
Out of control	Beyond the effective controlling distance.	Ensure that the flying distance is within 30 meters.

JJRC TECHNICAL SUPPORT

Dear Customer,

Thank you for choosing JJRC product. Please visit JJRC official website for more FAQ and information if there is any problem of using our product.

- Product Operation: Please visit JJRC College for tutorial video or user manual.
- Product Features: Please refer to product page description or product brochure.
- After–sale Service: Please refer to conditions and terms of after–sale service. The final interpretation right belongs to all JJRC.

Should you have any further questions, please visit JJRC Online Feedback and leave your message.

Thank you again for your support!

JIANJIAN TECHNOLOGY CO.,LTD.
www.jjrc-tech.com