



14+

ATTENTIONS

- 1.The 4-axis quadcopter is suitable for indoor/outdoor flight, please make sure the outdoor wind force is less than Beaufort force 4.
- 2.It adopts 2.4G frequency band for long remote control distance; allows multiple flights at the same time and in a same area without any interface. Gamer can control it to fly forward/backward, left/right sideward, turn left/right, to flip and roll.
- 3.The remote-controlled distance will be shortened when the battery power of the quadcopter/transmitter is insufficient. The quadcopter will be unable to take off or fly high when the power of quadcopter is insufficient.
- 4.Please repair the quadcopter in time when it is damaged. Do not fly the quadcopter when it is seriously damaged (rotor wing breakage), or it might lead to injury.
- 5.Do not crash the quadcopter from high altitude or crash it seriously, or it might shorten its lifetime.
- 6.Please read this manual carefully before operation and keep it properly for future reference.

-1-

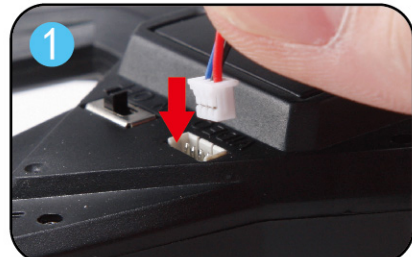
CONTENTS

A.PRE-FLIGHT PREPARATION	3~5
1.Camera installation	3
2.Fan installation	3
3.Lithium battery charging	4
4.Remote control battery installation	4
5.Attentions to lithium battery usage.....	5
B.INSTRUCTION OF REMOTE CONTROL	6~8
1. Parts of remote control	6
2.Signal connection of transmitter and receiver	6
3.Transmitter calibration	7
4.Operation method	7~8
C.FLYING EXERCISE	9~10
1.Pre - flight environment	9
2. Fundamental flying	9
3. 3D Flips and Rolls	10
D.COMMON PROBLEMS AND SOLUTIONS	10
E.ACCESSORIES	11~12

-2-

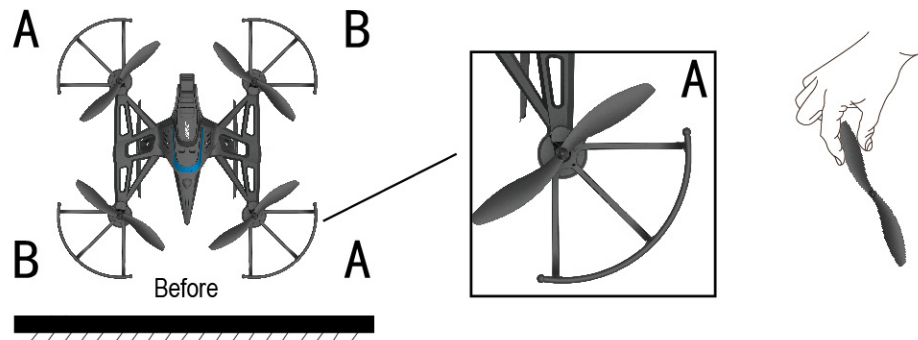
A.PRE-FLIGHT PREPARATION

1.Camera installation



2.Fan installation

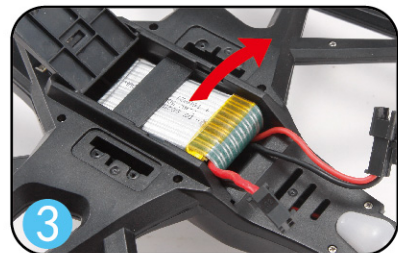
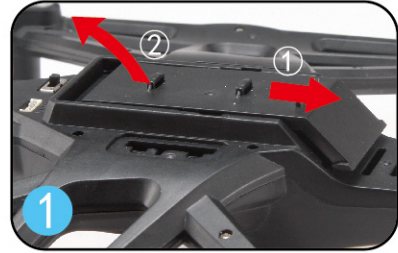
Installation of fan blades- the fan blades should be installed to the designated place. The number of fan blade should be the same as the number of air frame. A is corresponding with A, B is corresponding with B, press down the fan blades with the motor shaft. Please do not deform it.



-3-

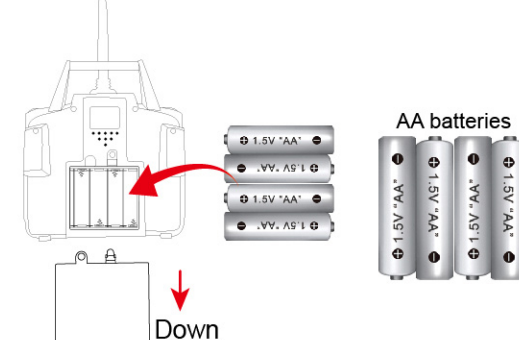
3.Lithium battery charging

Take out the lithium battery from the battery holder and disconnect with the power socket as shown in the figure, and connect the USB plug of charger with the computer USB port, then connect the charging socket of the charger with the lithium battery plug. When charging, the LED will light up; when fully charged, the LED will light off. The charging time is about 100 minutes.



Attention:
1.The remote-controlled distance will be shortened when the battery power of the quadcopter/transmitter is insufficient.
2. The quadcopter will be unable to take off or fly high when the power of quadcopter is insufficient.

4.Remote control battery installation



Battery installation method: Open the battery cover on the back of the transmitter, according to the polarity indications on the battery compartment, load 4* AA batteries (not included) correctly.

-4-

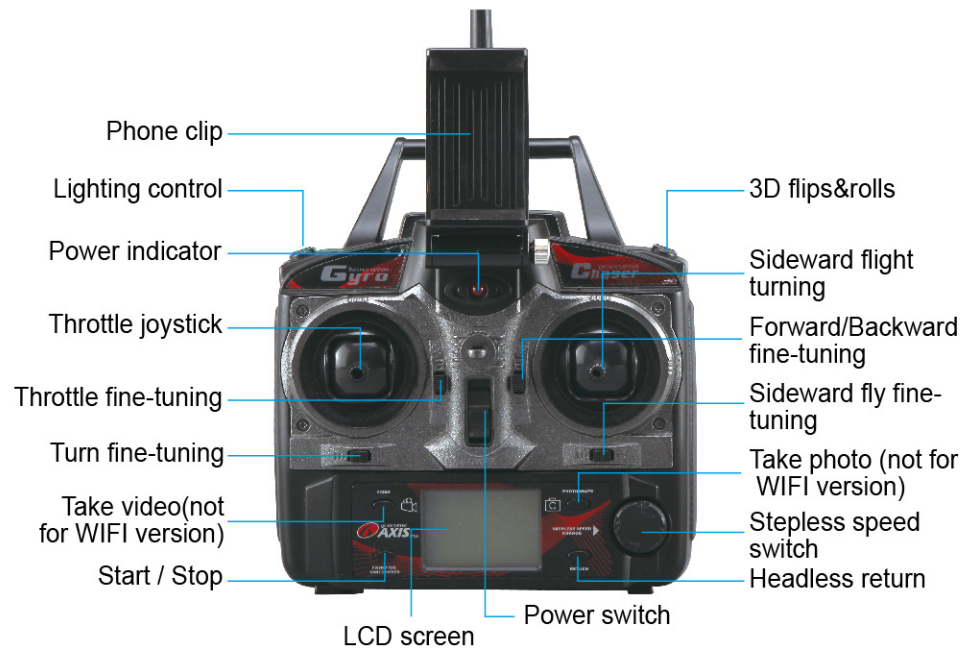
5.ATTENTION ON LITHIUM BATTERY USAGE

- There is a certain risk when using lithium battery. It may cause fire, body injury or property loss. Users must be aware of the risks of using this product. Manufacturers,retailers and dealers do not bear any responsibility once accidents occur, so please read the safety guidelines and charging instructions carefully before operation.
- If battery leakage occurs, please avoid contacting your eyes and skin with electrolyte. Once it happens, please wash your eyes with clean water and seek medical care immediately.
- Please remove the batteries to avoid the damage to the product caused by batteries leakage if you do not use the transmitter for a long time.
- Please comply with the following requirements strictly, or it may cause fire, electric shock or explosion.
Battery Charging
- Please use the charger from original factory to ensure your safe usage.
- Do not charge the dilatat or outworn battery.
- Do not overcharge the battery.Please pull out the charger once the battery is fully charged.
- Do not charge the battery next to inflammables or on the surface of electro-conductive objects.When charging please observe the battery at all times.
- Do not charge batteries which not cool down yet.
- The charging temperature should be between 0℃ to 40℃. Recycle
- Do not deal with the related equipment as daily rubbish. The damaged/unusable batteries should be put into the designated container .
- This equipment is composed of electronic elements and batteries. For electronics garbage, please dispose them according to the special requirements.
- Please familiarize yourself with the local garbage disposal method.

-5-

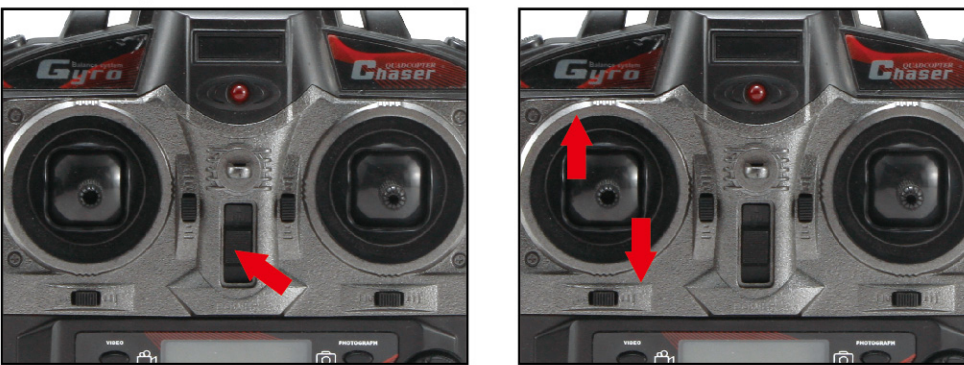
B.INSTRUCTION OF REMOTE CONTROL

1.Parts of remote control



2.Signal connection of transmitter and receiver

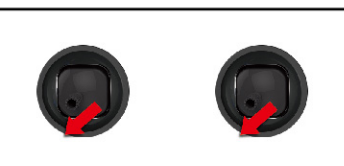
Place the quadcopter on a level surface. Turn on the transmitter (the indicator light of transmitter and four LEDs of quadcopter flashing). Push the left joystick to the highest point(the indicator light of transmitter and four LEDs of quadcopter flashing),then push back to the lowest point (the indicator of transmitter and four LEDs of quadcopter are always on), and the signal connection is completed.



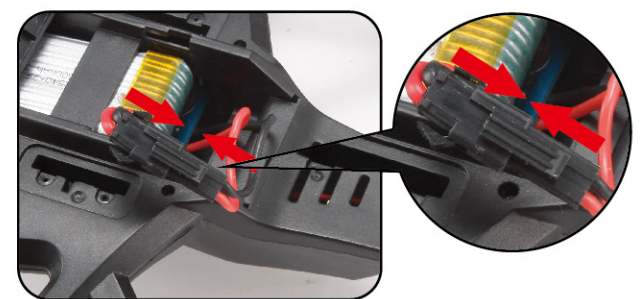
-6-

3.Transmitter calibration

Turn on the quadcopter and transmitter. Place the quadcopter on a level surface after the pairing. Press the 3D flips&rolls key.Push two joysticks at the same time to the lower left corner at a 45-degree angle for about 2 seconds. When the lights of quadcopter are on and then start flashing and keep on again, the calibration is complete. The quadcopter must be placed on a horizontal surface in a steady state when the calibration is conducted.



4.Operating methods

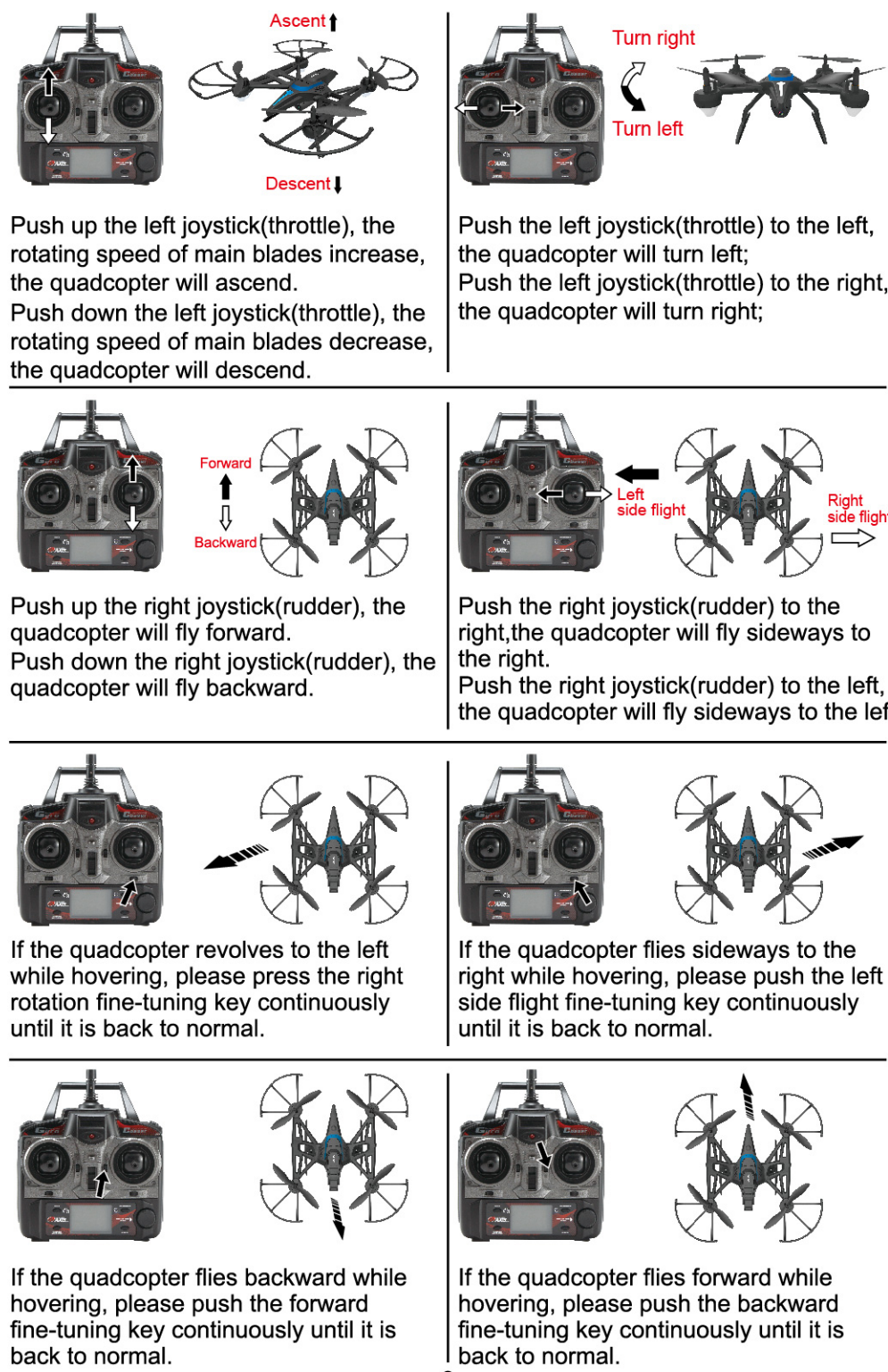


Attention: After flight, please disconnect the battery plug from the power connection of circuit board in case of battery damages.

- 1.Connect the power plug of the quadcopter with the lithium battery socket correctly as shown in the figure. Place the quadcopter on a level surface, and please do not move it when the indicator light of mainboard is flashing.
2. Push throttle joystick to the lower right corner. When the lights of quadcopter are on and then start flashing and keep on again, the calibration is complete.
- 3.Please put the quadcopter in an open space. Before flight, please make sure that the rear part of quadcopter is pointing to you directly.

Attention: Blue flashing lights indicate forward while red flashing lights indicate backward.

-7-



-8-

Attention: When the quadcopter is within 30cm from the ground, it will be affected by the blade vortex made by itself and become unstable. This is "ground effect". The lighter the quadcopter is, the greater the effect will be.

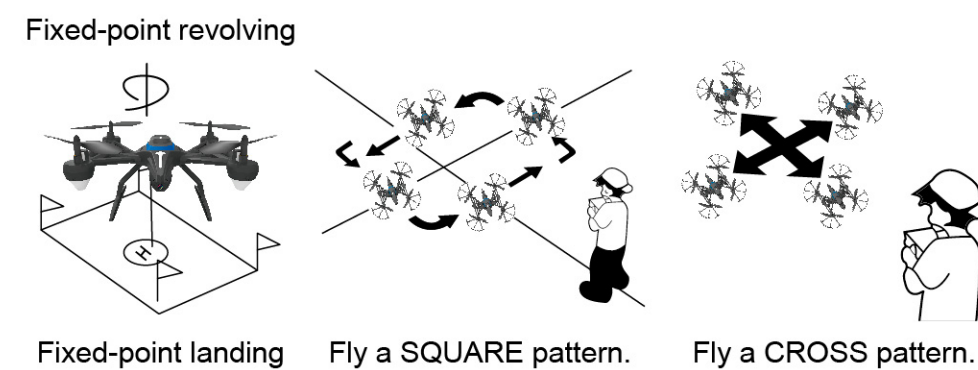
C.FLYING EXERCISE

1.Preflight environment

- 1.Indoor flying: choose a wide place without barriers, pets and people.
- 2.Outdoor flying: Choose a warm, sunny and windless day.
①Do not fly in extreme temperatures. Flying in extreme temperatures may affect the performance and damage the product.
②Do not fly in windy days. The performance and the control of the quadcopter will be affected by the strong winds. Flying in winds condition may cause disappearance or damages to the quadcopter.

2.Fundamental flying

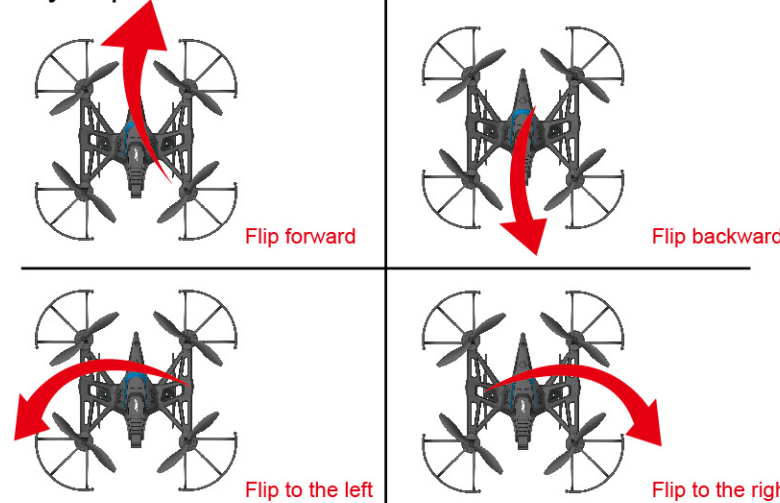
You can try to fly a square, cross-shaped pattern after the fundamental flight training of fixed-point take-off, landing, rotation and other basic exercises.



-9-

3.3D Flips and Rolls

When you skillfully operate the basic moves, you can try some adventurous rotations. Fly the quadcopter more than 3 meters high from the ground, push the rotation button and push the right joystick(rubber) to one direction, the quadcopter will rotate to the direction you push.

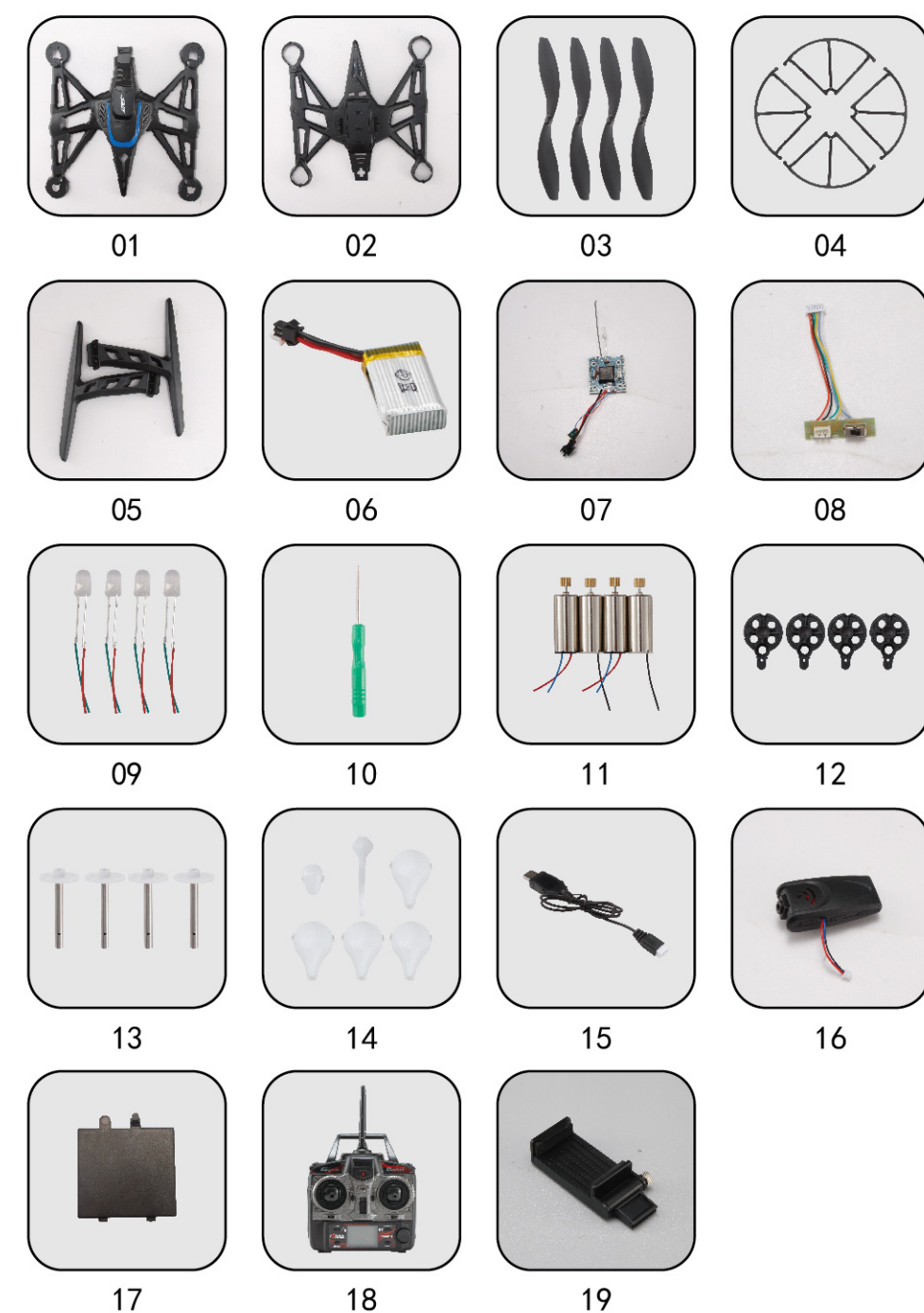


D.COMMON PROBLEMS AND SOLUTIONS

PROBLEMS	CAUSES	SOLUTIONS
Transmitter not working	1. The transmitter switch is on "OFF".	1. Turn on the transmitter.
	2. Install the batteries improperly.	2. Check and make sure that the batteries are loaded according to the polarity instructions on the battery box correctly.
	3. Battery exhausted.	3. Replace with new batteries.
Control failure	1. The remote control is not turned on	1. Turn on the remote control
	2. Too strong wind force.	2. Do not fly in windy days. The performance and the control of the quadcopter will be affected by the strong winds
Fail to ascend	1. The rotation speed of main blades is too slow.	1. Push up the throttle joystick.
	2. The battery of the quadcopter is not fully charged.	2. Please full charge the quadcopter.
Landing too soon	The throttle stick is pulled down too fast	Pull down the throttle stick slowly to perform a smooth landing.
Out of control	Beyond the effective controlling distance.	Ensure that the flying distance is within 30 meters.

-10-

E.ACCESSORIES



-11-

NO.	Name	Quantity	NO.	Name	Quantity
01	Up cover of enclosure	1	11	Motor	4
02	Down cover of enclosure	1	12	Gear assembly	4
03	Propeller	4	13	Gear	4
04	Carbon fiber	4	14	Lampshade	3
05	Undercarriage	2	15	USB charger	1
06	Lithium battery	1	16	Camera	1
07	Receiver	1	17	Battery cover	1
08	Swith board	1	18	Transmitter	4
09	Flashing lights	4	19	Mobile phone holder (only for WIFI version)	1
10	Screw	1			

-12-