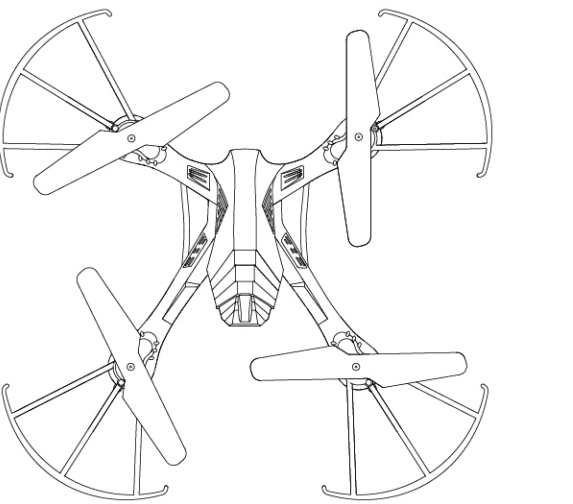


VERSTAILE 6-AXIS GYROSCOPE QUADROCOPTER

AGES 14+



INSTRUCTION MANUAL

IMPLEMENT STANDARD:GB/T26701-2011

Key features of quadrocopter

- Four-axis struture makes the quadrocopter more flexible and rapid when flying.It is wind-resistant and can be flown indoor or outdoor.
- Built-in 6 axis gyroscope for precise hovering in the sky.
- Simple modular design makes changing parts easy.
- With 360°3D eversion and throwing flight function.
- Headless Flight Model · Return Key.
- Light-control Fast-spinning

PREFACE

Thanks for using products. Quadrocopter is the first quadrocopter which can fly outdoor in a wild weather. In order to play quadrocopter more convenient and easy, pleasure read it carefully before playing the quadrocopter.Meanwhile, please keep it well, and take it for reference when adjustment and maintenance.

Flight vehicle can satisfy you whatever rainy or sunny, even when outdoor wild grade 3-4, it will keep moving.

WARNING LABEL LEGEND

	Mishandling due to failure to follow these instructions may result in damage or injury.
	Mishandling due to failure to follow these instructions may result in danger.
	Do not attempt under any circumstances.

IMPORTANT NOTES

Quadcopter is not a toy, miniature remote control four-axis aircraft, but there is still some risk of the matter with instructions to correctly use the model in accordance with the Security, the dismantling of any modification or improper use of the product are not familiar with may be dangerous to the risk of unexpected or accidental, please do not overlook. Manufacturer and dealer assume no liability for accidental damages by abnormal wear of pads, in proper assembly, or operation in unsafe manners.This product is intended for use by age 14 years or older. Please ensure the product is operated under safe environment.

We recommend that you seek the assistance or an experienced pilot before attempting to fly our products for the first time. A local expert is the best way to properly assemble, setup, and fly your model for the first time. The requires a certain degree of skill to operate, and is an item subject to normal wear and tear. Any damage or dissatisfaction as a result of accidents or modifications are not covered by any warrantee and cannot be returned for repair or replacement. Please contact our distributors are not covered by any warrantee and cannot discounted rates when you experience problems during operation or maintenance.

SAFETY NOTES

WARNING Fly only in safe areas away from other people. Do not operate R/C aircraft within the vicinity of or people. R/C aircraft are prone to accidents, failures, and responsible for their actions, and damage or injury occurred during pilot error, and radio interference. Pilots are responsible for their actions and damage or injury occurred during the operation or as a result of R/C aircraft models.

FORBIDDEN SPECIAL DESPECIAL DESIGN FOR INDOOR & OUTDOOR,PLEASE KEEP IT AWAY FROM OBSTACLE

This product is suitable for indoor and outdoor (the wind grade should be no more than 4), please choose a place without obstacle, and keep distance from crowd and pets, don't play it under unsafe, for instance, heat source, wire or electronic power source, in order not to be damaged by collision landing, entanglement and lead to a fire, electric shock and cause losses of lives and property.

FORBIDDEN PREVENT MOISTURE R/C models are composed of many precision electrical components. It is critical to keep the model and associated equipment away from moisture and other contaminants. The introduction or exposure to water or moisture in any form can cause the model to malfunction resulting in malfunction, or a crash. Do not operate or expose to rain or moisture.

FORBIDDEN PROPER OPERATION To avoid potential fire hazard from batteries, please do not short, reverse polarity, or puncture batteries. Battery charging must be done under supervision at all times, and at location out of reach by children. Double check the four AA batteries are rechargeable Ni-CD/Ni-MH batteries before charging. The manufacturer or this product will not be liable for accidental damages incurred by charging non-rechargeable batteries.

FORBIDDEN SAFETY NOTE FOR NI-MH BATTERIES Make sure the batteries are installed based on polarity indicated in the case and do not mix batteries of different chemistry/spec. Please take out the batteries if you are not going to use for a long time to avoid potential leakage which may damage the transmitter. Please dispose depleted batteries according to local laws and ordinances. Do not dispose improperly.

FORBIDDEN SAFETY NOTE ON LI-POLYMER BATTERIES Li-Polymer batteries poses higher operational risks compared to other battery chemistry,thus it is imperative to follow its usage instructions. Manufacturer and dealer assume no liability for accidental damages caused by improper usage.Do not use charger other than the factory supplied unit to avoid potential fire and explosion.Do not crush, disassemble, burn, and reverse polarity. Avoid metallic materials to come into contact with battery's polarity and cause it short and never puncture batteries to avoid fire hazards.Battery charging must be done under supervision at all times, and at location out of reach by children. Please stop the use or charge of the battery should there be an unusual increase in battery temperature after use. Continue use of this battery may cause it to expand, deform, explode or even result in fire hazards.Please dispose depleted batteries according to local laws and ordinances. Do not dispose improperly.

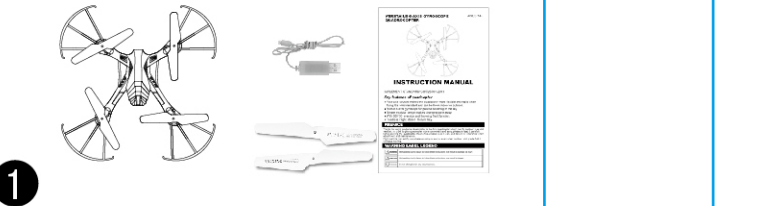
CAUTION KEEP AWAY FROM HEAT R/C models are made of various forms or plastic. Plastic is very susceptible to damage or deformation due to extreme heat and cold climate. Make sure not to store the model near any source of heat such as an oven, or heater. It is best to store the model indoors, in a climate-controlled, room temperature environment.

WARNING OBTAIN THE ASSISTANCE OF AN EXPERIENCED PILOT The products are suitable for more than 14 years old age.At the beginning it will have some certain difficulty in learning, suggestion guidance by experienced when playing.

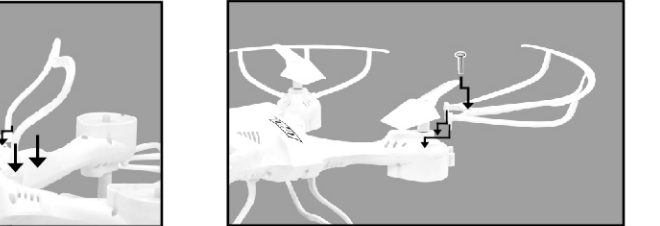
WARNING In order to ensure the aircraft radio station (station) the requirements of the electromagnetic environment, banned in airport runway center as the dot, the 5000 m radius area The remote control with all kinds of model and the relevant state departments issued during the radio control command, regional area, should stop using the model of the remote control as required.

CONTENTS

- Quadrocopter
- USB Charging Cable
- Transmitter
- Main blades
- Instruction manual

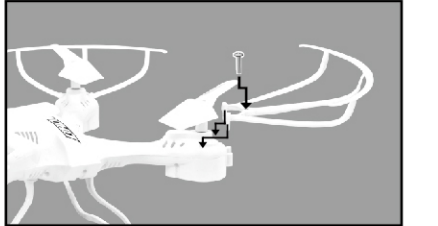


INSTALL LANDING SKIDS & BLDAE PROTECTING FRAME



(Figure.1)

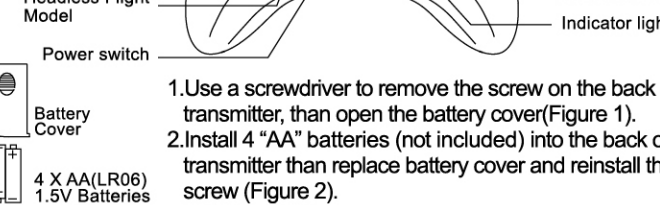
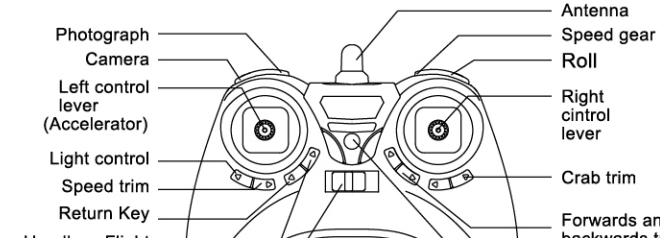
1.Install the landing skids to the bottom of quadrocopter (Figure 1).



(Figure.2)

2.Install the blade protecting frame to every corner than lock screws (Figure 2).

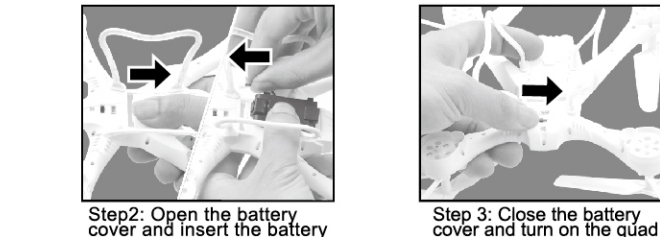
GET TO KNOW YOUR TRANSMITTR



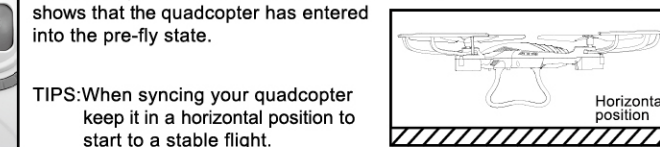
(Figure.2)

1.Install batteries with correct polarity. 2.Do not mix old and new batteries. 3.Do not mix different types of batteries.

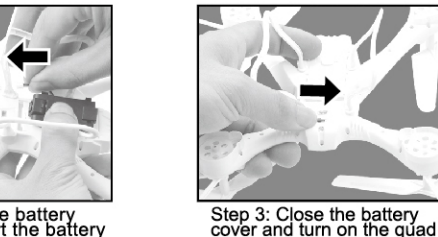
READY TO FLY YOUR QUADROPTER



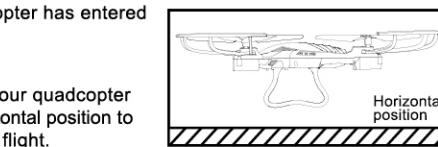
Step 1: Press the ON/OFF power switch up.



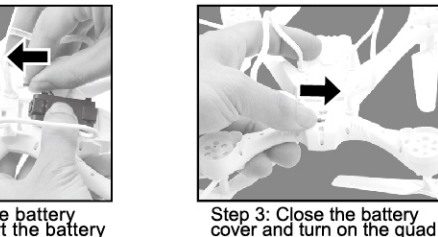
Step 2: Open the battery cover and insert the battery into power port.



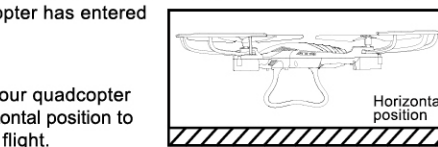
Step 3: Close the battery cover and turn on the quadcopter.



Step 4: Push the throttle lever to the highest position, and then pull it back to the lowest position.

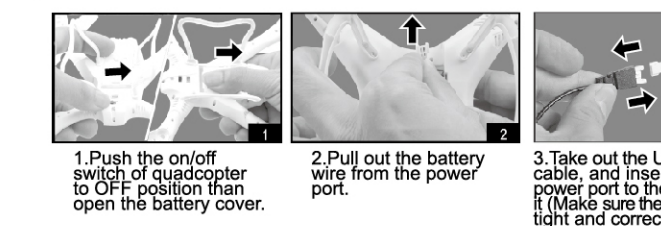


Step 5: Push the double rocker button down for calibration.



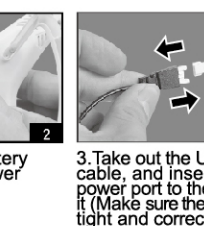
Step 6: Push the double rocker button down for calibration.

CHANGE BATTERY OF QUAD OPTER



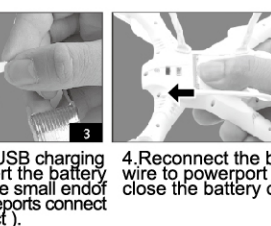
(Figure.1)

1.Push the on/off switch of quadrocopter to OFF position than open the battery cover.



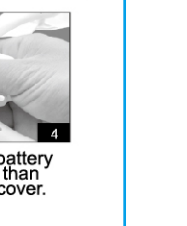
(Figure.2)

2.Pull out the battery wire from the power port.



(Figure.3)

3.Take out the USB charging cable, and insert the battery power port to the small end of it.



(Figure.4)

4.Reconnect the battery wire to powerport than close the battery cover.

(Figure.4)

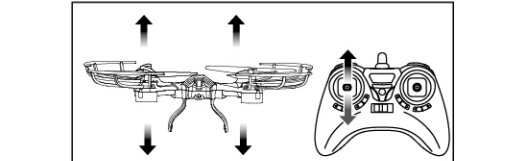
4.Reconnect the battery wire to powerport than close the battery cover.

BATTERY REPAIR & MAINTENANCE

- 1.Battery should be put in the dried or ventilated place with environment temperature about 18-25°C.
- 2.In order to enhance the using life of the battery, please avoid repeat charging or excessive discharging.
- 3.When the battery needs to be stored for a long time, please charge the battery first. That is to say, charge the battery for about 50-60% of the volume and then well store it.
- 4.If you do not use it for more than 1 months, it's highly recommended that you need to check the battery voltage every month so as to make sure the voltage no less than 3V. Otherwise please do by following No.(3) mentioned.

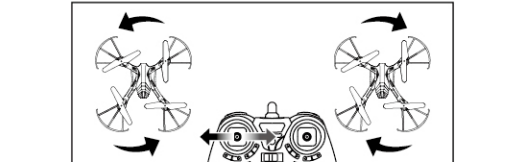
Charging time: about 70-90 minutes— Flying time: about 6-7 minutes!

Hover up and down



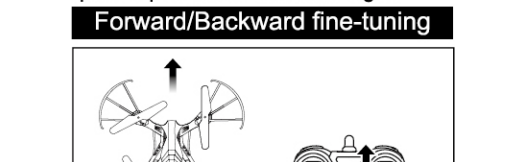
Push the throttle up or down, the quadrocopter flies upward or downward.

Turn Left and Right

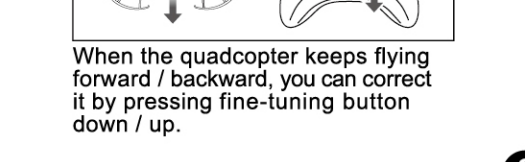


Pull the throttle left or right, the quadrocopter turns to left or right.

Forward/Backward fine-tuning

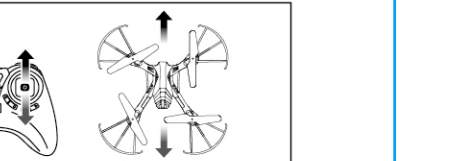


When the quadrocopter keeps flying forward / backward, you can correct it by pressing fine-tuning button down / up.



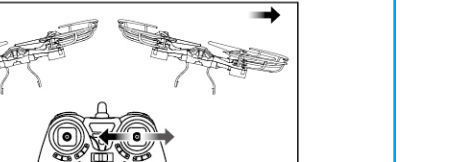
When the quadrocopter keeps flying to left / right side, you can correct it by pressing the Fine-tuning button right / left.

Forward and backward



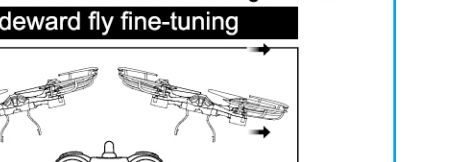
Push the direction lever up or down, the quadrocopter flies forward or backward.

Sideward fly

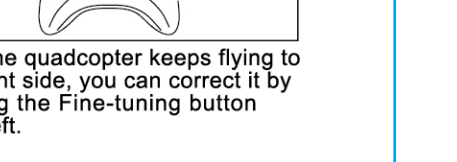


Pull the direction lever left or right, the quadrocopter flies to left side or right side.

Sideward fly fine-tuning



When the quadrocopter keeps flying to left / right side, you can correct it by pressing the Fine-tuning button right / left.



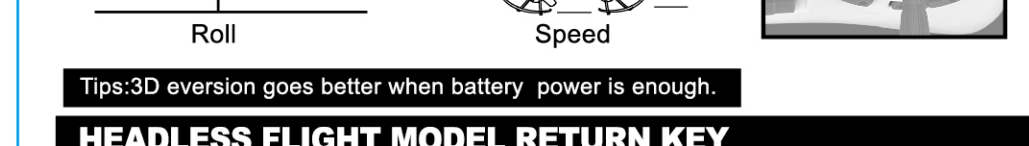
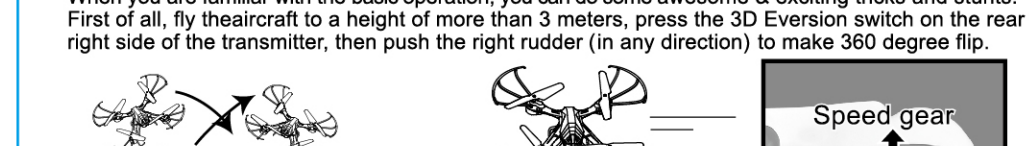
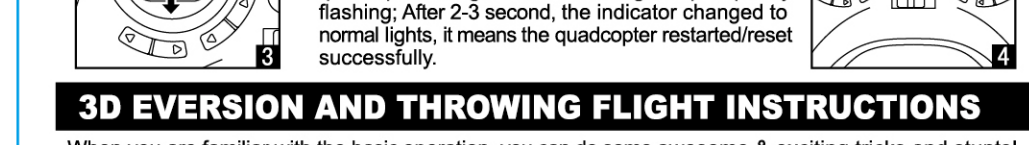
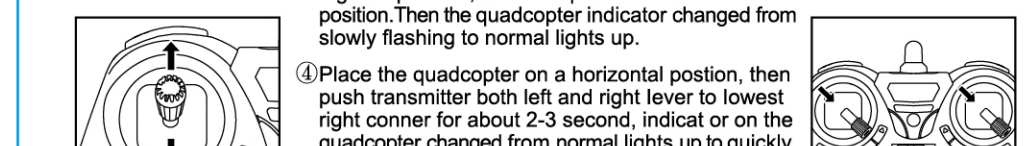
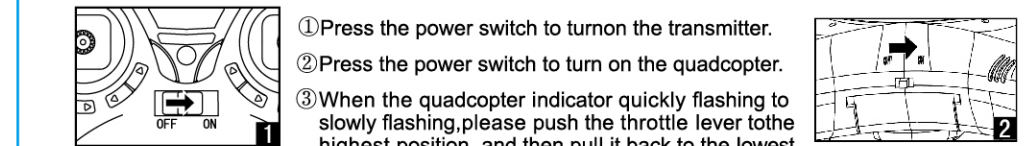
When the quadrocopter keeps flying to left / right side, you can correct it by pressing the Fine-tuning button right / left.

INTRODUCTION TO QUADROPTER FUNCTIONS

Low-voltage protection: When the quadrocopter battery is not enough, the rotors will be stopped power supply. As the quadrocopter control system will protected battery automatically.

Over-current protection: When the quadrocopter's rotating blade is collided or jammed, the control system will stop supplying power for the rotors automatically. Then please re-match the signal for flying.

Calibration function: In case of flight disorder or sideward flight, restore factory default settings by the following



Tips:3D eversion goes better when battery power is enough.

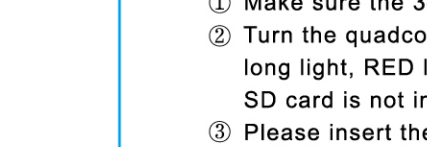
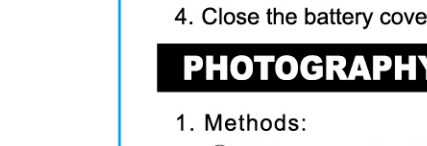
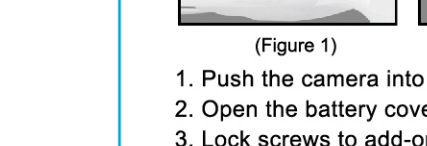
HEADLESS FLIGHT MODEL RETURN KEY

- 1.Headless Flight Model
- 2.Locking Course(After course locking. The front and back left and right do not change when the fuselage turn. There will be one clear sound from the transmitter, this shows that the quadrocopter has entered into the pre-fly state.
- 3.If the course deviation, pull the double rocker button down for calibration. Lights flash fast mean calibrating now, lights stop flashing mean calibration completion.
- 4.Press the headless flight mode button again will cancel the headless flight mode.

2.Return Key

- 1.If the vehicle not to see clear, Please press Return Key will fly back.
- 2.When you can identify the direction of vehicle Any strick on the right side of rocker to return.

INSTALL CAMERA



PHOTOGRAPHY / VIDEO INSTRUCTIONS

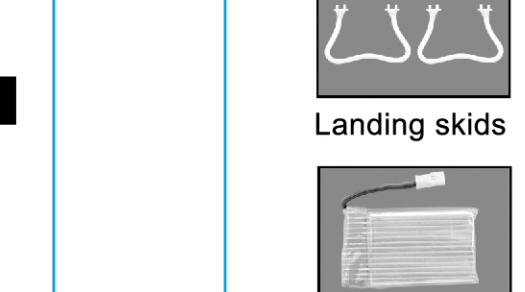
1. Methods:
 - ① Make sure the 3-pin plug of camera is inserted to the quadrocopter.
 - ② Turn the quadrocopter power on, the camera works normally when the GREEN long light, RED light flashing. If the RED indicator keep light on, it means the SD card is not in the camera.
 - ③ Please insert the SD card, than the RED light stop flashing.
- 2.Get to know take photo and video:
 - ① Take Photo: Make sure camera normally work, when push the button "C" up, camera will take a photo after a beep from transmitter and the GREEN indicator on camera will be RED and flash on time.
 - ② Take Video: Make sure camera normally work, when pull the button "C" down, camera starts to take video after a beep from transmitter and the GREEN indicator on camera will change to RED than keep flashing. Press the button "C" slightly again, another beep from transmitter means video stopped and the RED flashing light on camera will be GREEN and keep light on.

SPARE PARTS



Body cover Lower body Main blades Protecting frames

BREAKDOWN & DIAGRAM



Landing skids Motor Light boards Receiver board Battery USB charging Camera Transmitter

BREAKDOWN & DIAGRAM



Landing skids Motor Light boards Receiver board Battery USB charging Camera Transmitter



Landing skids Motor Light boards Receiver board Battery USB charging Camera Transmitter



Landing skids Motor Light boards Receiver board Battery USB charging Camera Transmitter

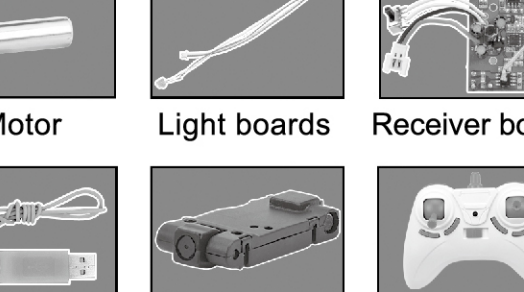


Landing skids Motor Light boards Receiver board Battery USB charging Camera Transmitter



Landing skids Motor Light boards Receiver board Battery USB charging Camera Transmitter

BREAKDOWN & DIAGRAM

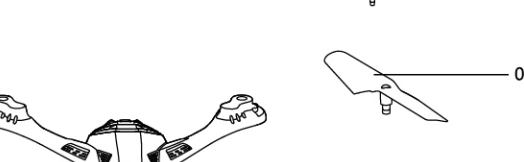


Landing skids Motor Light boards Receiver board Battery USB charging Camera Transmitter

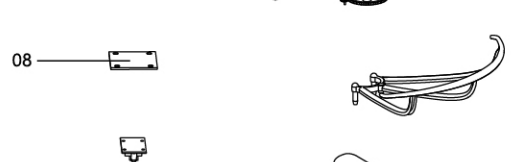
BREAKDOWN & DIAGRAM



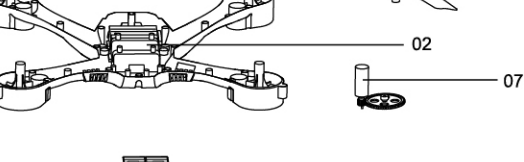
Landing skids Motor Light boards Receiver board Battery USB charging Camera Transmitter



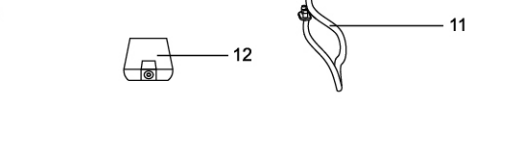
Landing skids Motor Light boards Receiver board Battery USB charging Camera Transmitter



Landing skids Motor Light boards Receiver board Battery USB charging Camera Transmitter



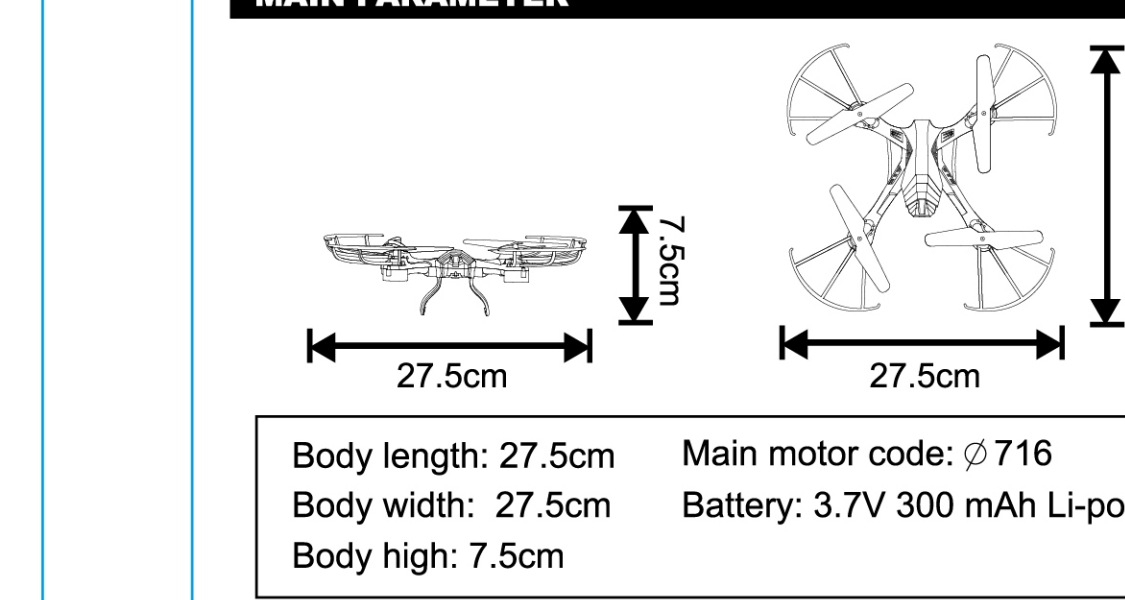
Landing skids Motor Light boards Receiver board Battery USB charging Camera Transmitter



Landing skids Motor Light boards Receiver board Battery USB charging Camera Transmitter

Code	Description	Quantity	Code	Description	Quantity
01	Upper body	1	08	Receiver board	1
02	Lower body	1	09	Battery cover	1
03	Rotating blade	2	10	Gear	4
04	Reversing blade	2	11	Landing skids	2
05	Protecting frames	4	12	Camera	1
06	Receiver motor	2			
07	Rotating motor	2			

MAIN PARAMETER



Body length: 27.5cm Body width: 27.5cm Body high: 7.5cm Main motor code: Ø 716 Battery: 3.7V 300 mAh Li-poly



FCC CE RoHS RECYCLE

FCC CE RoHS RECYCLE