

AGE 14+

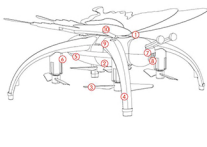
BUTTERFLY

BUTTERFLY-LIKE QUADCOPTER

*Please read this manual carefully before operation and keep it properly for future reference.

KNOW YOUR BUTTERFLY

The 2.4GHz spread spectrum allows remote control and multiple pilots to play simultaneously and separately. One-touch button on the remote controller and APP enable easy operations like forward, backward, left-sideward, right-sideward, turn left, turn right and 3D flips and rolls.



- 1 Upper casing
- 2 Lower casing
- 3 Propeller
- 4 Landing gear
- 5 Battery holder
- 6 Motor
- 7 Camera module
- 8 Camera
- 9 Power
- 10 Wings (Detachable)

1

Accessories

BUTTERFLY x1

(Battery Included)

USB charger x1

User manual x1

Remote control x1

(With Phone Holder)

Backup propeller x4

Blade replacement assembly tool x1

Notes:

Please check the number of accessories carefully (as shown above). Please provide proof of purchase and contact the store for replacement if any missing parts.

2

PRE-FLIGHT PREPARATION

1. Flight Environment



Please keep the drone in sight during the flight and keep it away from barriers, high-tension cables, trees and people.

Do not fly in extreme environment, such as hotness, coldness, strong wind or heavy rain.

3

2. Lithium Battery Instruction

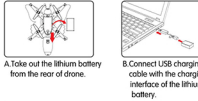
Battery Assembling for Remote Control



Notes:

1. Ensure the polarity symbols on the batteries match the symbols inside the battery compartment.
2. Do not mix new and old batteries.
3. Do not mix different types of batteries.

Battery Charging for Drone



Notes:

LED lights on when charging. LED lights off when finish charging. Charging time is about 40-60 minutes.

4

▲ Battery Instructions

There is a certain risk when using lithium battery. It may cause fire, body injury or property loss. Users must be aware of the risks and take full responsibility of using battery improperly.

- If battery leakage occurs, please avoid contacting your eyes or skin with electrolyte. Once it happens, please wash your eyes with clean water and seek medical care immediately.
- Please remove the plug immediately if you sense any peculiar smell, noise or smog.

Battery Charging

- Please use the charger from original factory to ensure your safe usage.
- Do not charge dislodge or outworn battery.
- Do not over charge battery. Please unplug the charger once fully charged.
- Do not charge the battery next to inflammables, such as carpet, timber floor or wood furniture or on the surface of electro-conductive objects. Please always keep an eye on the battery when charging.
- Do not charge battery which not cool down yet.
- The charging temperature should be between 0°C to 40°C.

Battery Recycling

Do not dispose the battery as daily rubbish. Please familiarize yourself with the local garbage disposal method and dispose it according to the special requirement.

5

KNOW YOUR REMOTE CONTROL

1. Operation Board of Remote Control



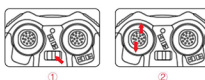
Notes:

Push both the left and right joysticks to bottom left corners at the same time for one key calibration. Push both the left and right joysticks to bottom right corners simultaneously for trimming.

6

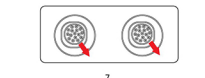
2. Pairing Remote Control with Drone

1. Turn on the power of the drone; put the drone on plain ground; check whether the indicator lights of remote control and LED lights of drone flash.
2. Push the accelerator joystick to the top and then pull back to the bottom. After the sounds of Di-Di, the flash of indicator lights of remote control and LED lights of drone will turn to constant lights, which means the pairing completes.



3. Calibration of Remote Control

Calibrate the drone when it cannot vertically ascend. Firstly push the accelerator joystick and steering joystick to the bottom outer corners. Then release all the buttons till the flash of the drone's indicator light turn to constant light. Thus the calibration completes. Ensure the whole process of calibration is operated under horizontal and steady circumstances.



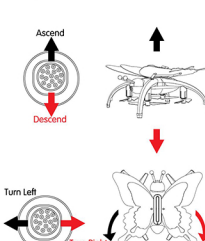
7

FLY WITH REMOTE CONTROL

1. Flying

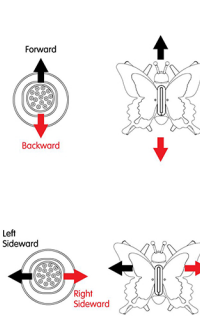
The left joystick is used to control flying height and left and right turning, while the right joystick is used to control forward, backward and sideward flights.

Left Joystick



8

Right Joystick

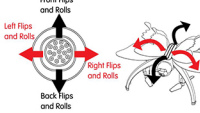


9

Flips and Rolls

Till the drone flies over 3 meters, press the button of flips and rolls and move the right joystick to certain direction to finalize flips and rolls.

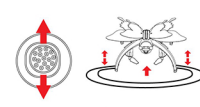
Right Joystick



Hovering

Operate the left joystick to make the drone ascend and then release the joystick. The drone will hover at the height you release the joystick.

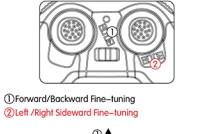
Left Joystick



10

2. Fine-Tuning

Gradually push the accelerator joystick to make the drone ascend. Fine-tune the direction when the drone rolls or deviates to one direction.



Notes:

When the drone is within 30cm from the ground, it will be affected by the blade vortex made by itself and become unstable. This is "ground effect". The lighter the drone is, the greater the effect will be.

11

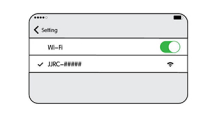
KNOW YOUR REMOTE CONTROL APP

1. WiFi Connection

Use your phone to scan the QR code, download and install the control software: "Butterfly Drone". Android, Android(Google Play) and iOS are all supported.



2. Turn on the drone and the lights will flash; turn on your mobile phone to connect WIR (JIRC-####), as shown in figure.



12

2. APP Interface Instruction



13

FLY WITH APP

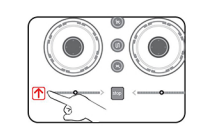
1. Remote Control Frequency Pairing

Click 1: "ON", then click 2: "Altitude Hold" for remote control frequency pairing.



2. One-Key Start

Click "One-Key Start" to activate the motor and propellers.

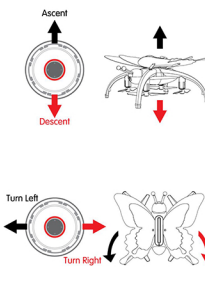


14

3. Basic Flight

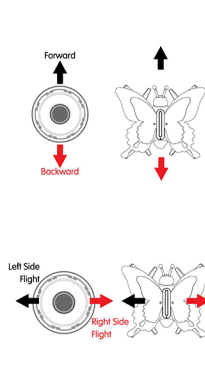
Use the left joystick to control the flight altitude and turn left/right, and the right joystick to control the forward, backward, left and right sideward flight directions.

Left Joystick



15

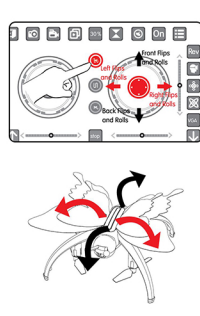
Right Joystick



16

Flips&Rolls

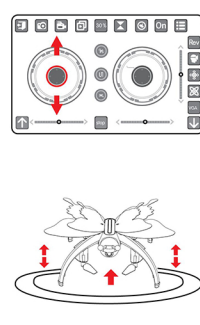
When the drone is reaching more than 3 meters high, click "Flips&Rolls" and move the right joystick to a certain direction, the drone will rotate in that direction.



17

Hover

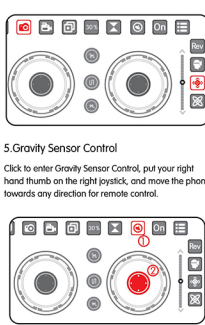
When you release the left joystick (throttle) after the ascend/descent action, the drone will hover at a certain height.



18

4. Take Selfies

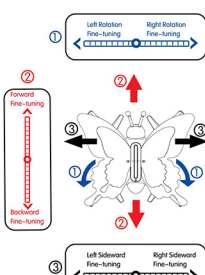
In the Altitude Hold mode, you can control the drone to turn the camera towards yourself, then click the camera button on the screen to take selfies.



19

6. Fine-Tuning

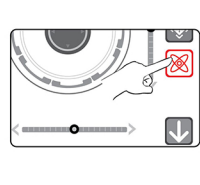
If the drone rotates or yaws, click the "Fine-Tuning" to the reverse direction of yawing till the yaw is adjusted and the drone stays oriented at the control.



20

7. Axis Calibration

When deviating from course due to crash, please control the drone back to a horizontal plane and click "Axis Calibration" for gyro calibration and take-off again.



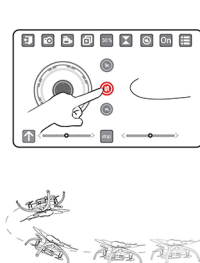
Notes:

When the drone is within 30cm from the ground, it will be affected by the blade vortex made by itself and become unstable. This is "ground effect". The lighter the drone is, the greater the effect will be.

21

8. Flight Planning

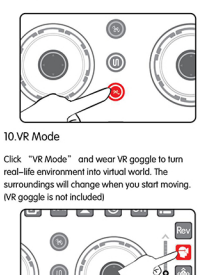
When the drone takes off, click "Flight Planning" button to activate flight path mode. Draw a path in the blank, and the drone would perform the flight path at the altitude as you pilot and fly on its own.



22

9. Sound Mode

Click "Sound Mode" and the drone would respond to your vocal operations to move forward, backward, left-sideward, right-sideward and take off and land.



23

FAQ

PROBLEMS	CAUSES	SOLUTIONS
Control failure	Not connect with the drone battery.	Connect the drone battery in right way.
	Too strong wind force.	Do not fly in windy days. The performance and the control of the drone will be affected by the strong winds.
Fail to ascend	The rotation speed of main blades is too slow.	Push up the throttle joystick.
	The battery of the drone is not fully charged.	Please full charge the drone.
Landing too soon	The throttle joystick is pulled down too fast.	Pull down the throttle joystick slowly to perform a smooth landing.
Out of control	Beyond the effective controlling distance.	Ensure that the flying distance is within 30 meters.

24

JIRC TECHNICAL SUPPORT

Dear Customer,

Thank you for choosing JIRC product. Please visit JIRC official website for more FAQ and information if there is any problem of using our product.

- Product Operation: Please visit JIRC College for tutorial video or user manual.
- Product Features: Please refer to product page description or product brochure.
- After-sale Service: Please refer to conditions and terms of after-sale service.

The final interpretation right belongs to all JIRC.

Should you have any further questions, please visit JIRC Online Feedback and leave your message.

Thank you again for your support!

JIANJIAN TECHNOLOGY CO., LTD.
www.jirc-tech.com

25