

INSTRUCTIONS FOR BEGINNERS

For beginners, please comply with following steps to start:

1. Check if any missing parts of the accessories.
2. Prepare a cross screwdriver by hand.
3. Study the remote control boat before operation.
4. Insert the batteries into the RC boat and charge them up to full.
5. Insert the batteries into the remote controller.
6. Play in a safe environment.
7. Pair the remote control boat with the remote controller.
8. Be familiar with the remote control.
9. Oil the boat once every 10 times of use. (Not included)
10. Please do not operate the boat with remote control when it is still on the ground in case of damage.

1

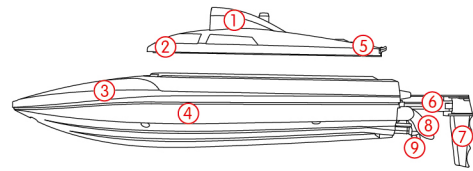
S-SERIES HIGH-SPEED
RC RACING BOAT WITH
HD CAMERA

*Please read this manual carefully before operation and keep it properly for future reference.

KNOW YOUR SPECTRE

SPECTRE applies 2.4G remote control system to enable multi players compete without interference. It is easy to maneuver and control via the controller for fundamental movements such as high speed rotation, forward, backward, 180° flips and rolls as well as for further operations including fine-tuning, backward and capsiz recovery, taking photos and videos and experiencing VR etc., which combine together to create a fast and thrilled cruising experience.

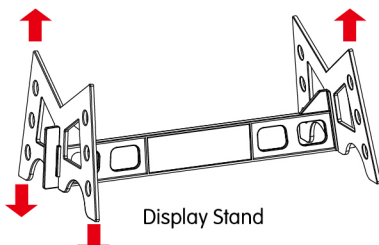
1.SPECTRE RC Boat



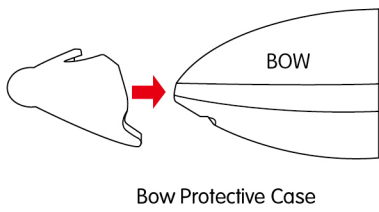
- | | |
|----------------|---------------------|
| ① Camera | ⑥ Servo Pull Rod |
| ② Hatch | ⑦ Steering Rudder |
| ③ Hull | ⑧ Navigation Rudder |
| ④ Drain Hole | ⑨ Propeller |
| ⑤ Hatch Switch | |

2

SPECTRE RC boat includes a display stand, which provides protection for the boat itself. SPECTRE RC boat is featured with double-hatch design to improve water resistance.

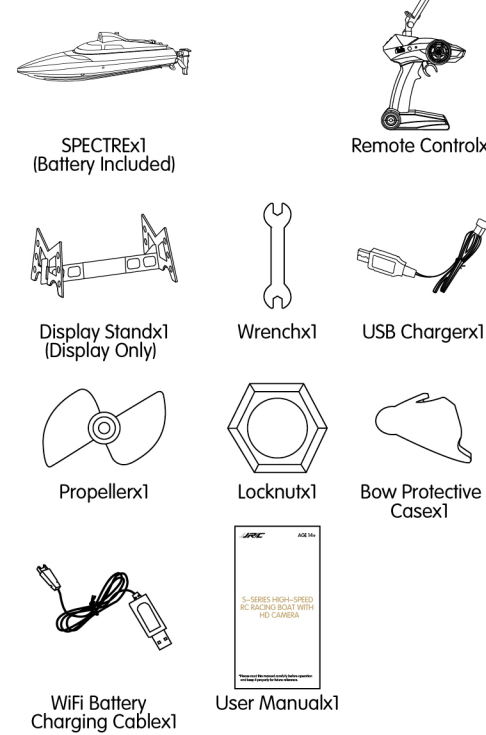


The exclusive protective case protects the bow from rubs or collisions.



3

INCLUDED ACCESSORIES

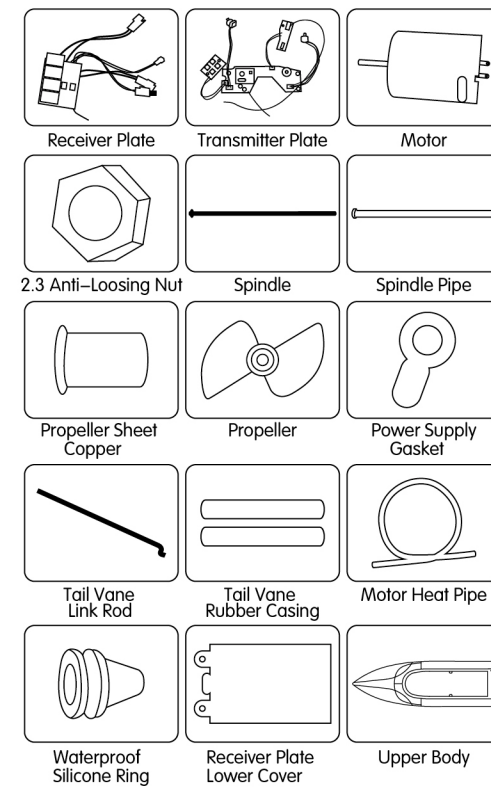


Notes:

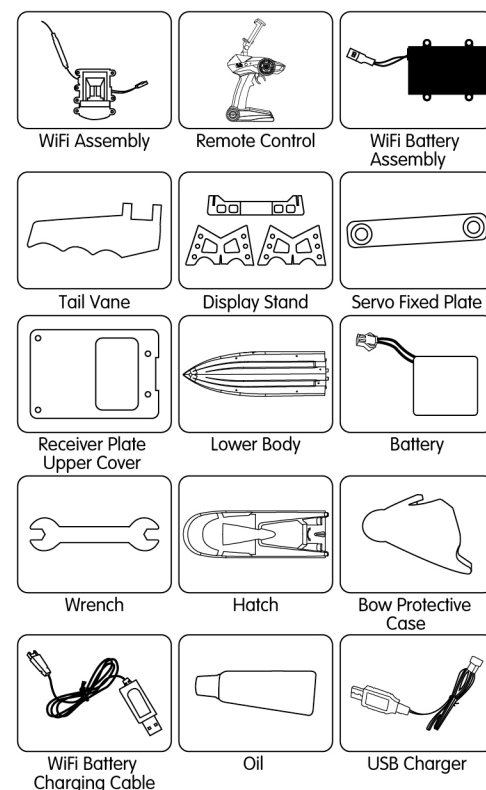
Please check the number of accessories carefully (as shown above). Please provide proof of purchase and contact the store for replacement if any missing parts.

4

OPTIONAL ACCESSORIES



5

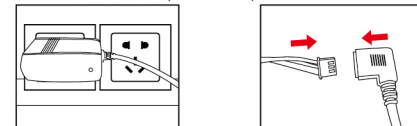


6

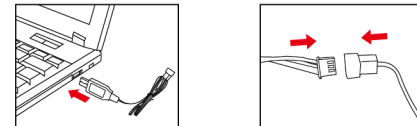
Battery Charging and Assembly for RC Boat

1.Battery Charging for RC Boat

Option One: Charge via charger (not included) connected to a wall socket (110v~240v).



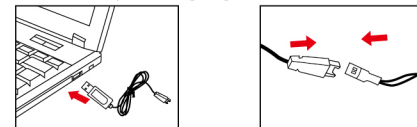
Option Two: Charging via USB cable.



Notes:

The red light turns on when the charging starts and turns off when the charging completes. It has a charging time of about 2 hours and a playing time of about 7 minutes.

2.WiFi Battery Charging

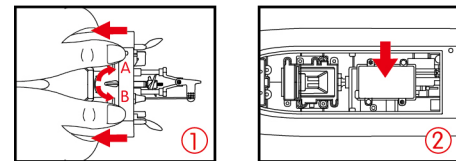


Notes:

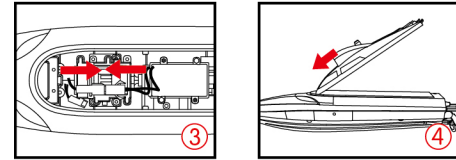
The red light turns off when the charging starts and turns on when the charging completes. It has a charging time of about 1.5 hours and a playing time of 2 hours.

7

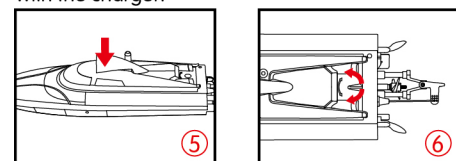
3.Battery Assembly for RC Boat



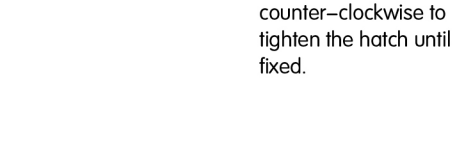
Turn the switch to the left or right and lift the cover at the A and B points as to open it.



Connect the battery with the charger.



Depress the hatch until fixed.

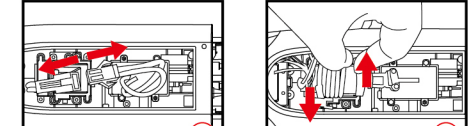


Turn the switch clockwise or counter-clockwise to tighten the hatch until fixed.

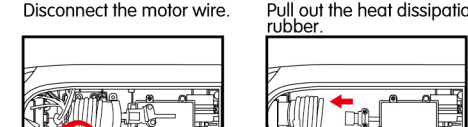
8

4.Spindle Oiling (Not included)

Oil the spindle once every 10 times of use. Remove the propeller and comply with the following steps to oil the spindle (Oil not included):



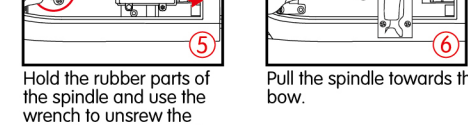
Disconnect the motor wire.



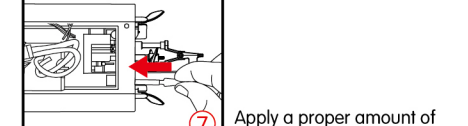
Unscrew the four screws on the motor base.



Hold the rubber parts of the spindle and use the wrench to unscrew the locknut and the propeller.

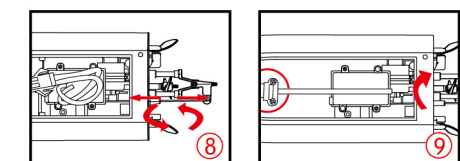


Apply a proper amount of oil to the tail of the spindle.

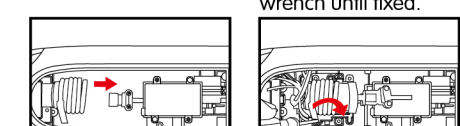


Apply a proper amount of oil to the tail of the spindle.

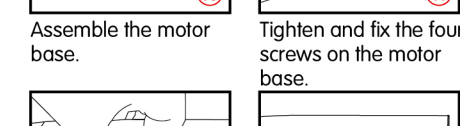
9



Spin the spindle forward and backward slowly to enable the inner wall coated evenly with oil.



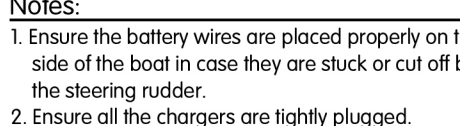
Hold the rubber parts of the spindle, install the propeller and locknut and screw them with wrench until fixed.



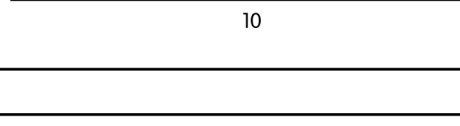
Assemble the motor base.



Tighten and fix the four screws on the motor base.



Refit the heat dissipation rubber.



Reconnect the motor wire.

Notes:

1. Ensure the battery wires are placed properly on the side of the boat in case they are stuck or cut off by the steering rudder.
2. Ensure all the chargers are tightly plugged.
3. Ensure the hatch is tightly closed to keep water out.

10

▲Battery Instructions

- There is a certain risk when using lithium battery. It may cause fire, body injury or property loss. Users must be aware of the risks and take full responsibility of using battery improperly.
- If battery leakage occurs, please avoid contacting your eyes or skin with electrolyte. Once it happens, please wash your eyes with clean water and seek medical care immediately.
- Please remove the plug immediately if you sense any peculiar smell, noise or smog.

Battery Charging

- Please use the charger from original factory to ensure your safe usage.
- Do not charge dilantant or outworn battery.
- Do not over charge battery. Please unplug the charger once fully charged.
- Do not charge the battery next to inflammables, such as carpet, timber floor or wood furniture or on the surface of electro-conductive objects. Please always keep an eye on the battery when charging.
- Do not charge battery which not cool down yet.
- The charging temperature should be between 0°C to 40°C.

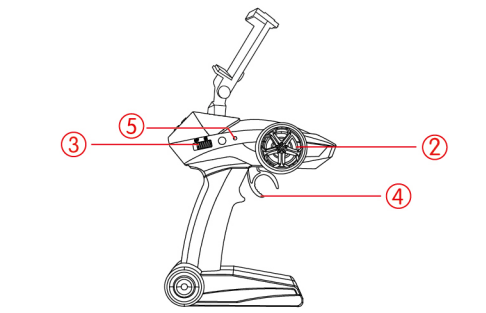
Battery Recycling

- Do not dispose the battery as daily rubbish. Please familiarize yourself with the local garbage disposal method and dispose it according to the special requirement.

11

KNOW YOUR REMOTE CONTROL

1.Operation Board of Remote Control

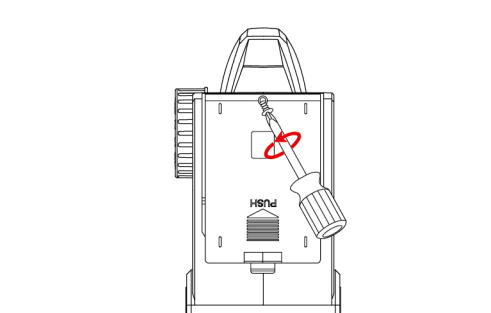


- | | |
|-------------------|--------------------------|
| ① Phone Holder | ⑥ Forward Fine-tuning |
| ② Steering Rudder | ⑦ Backward Fine-tuning |
| ③ Power Switch | ⑧ Turn Left Fine-tuning |
| ④ Throttle | ⑨ Turn Right Fine-tuning |
| ⑤ Red LED Light | |

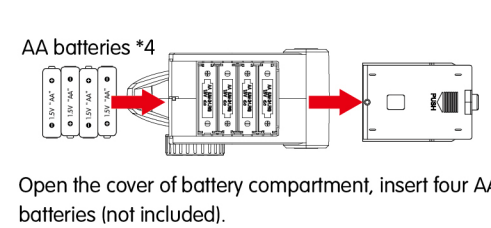
12

2.Battery Assembly for Remote Control

①Open the Remote Control Battery Cover



②Assemble Batteries for Remote Control



Open the cover of battery compartment, insert four AA batteries (not included).

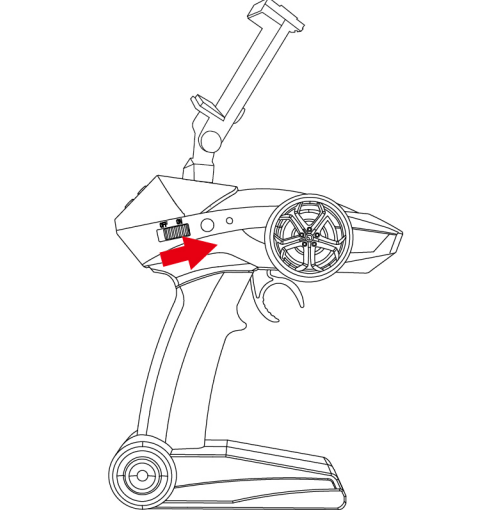
Notes:

1. Ensure the polarity symbols on the batteries match the symbols inside the battery compartment.
2. Do not mix new and old batteries.
3. Do not mix different types of batteries.

13

3.Pairing Remote Control with RC Boat

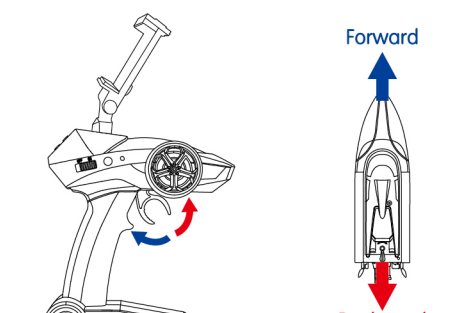
Power on the remote control. When the indicator light on the remote control turns up and flashes with a clear sound of beep, put the RC boat in the water and wait until the indicator light turns solid with continuous sounds of beep, indicating the process of paring between the remote control and the RC boat has been successful.



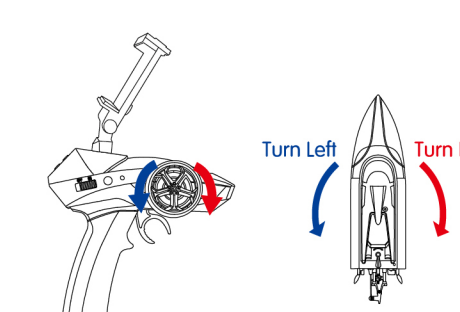
14

OPERATION WITH REMOTE CONTROL

1.Forward/Backward



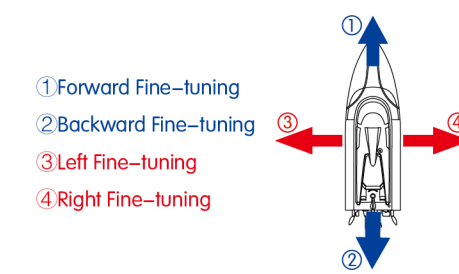
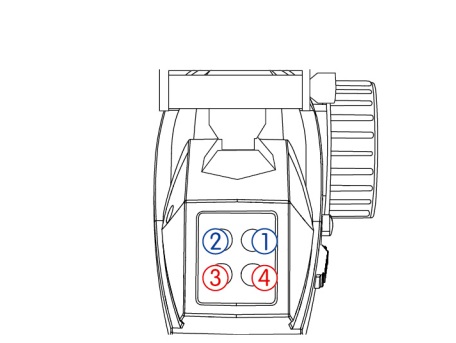
2.Turn Left/Right



15

3.Fine-tuning

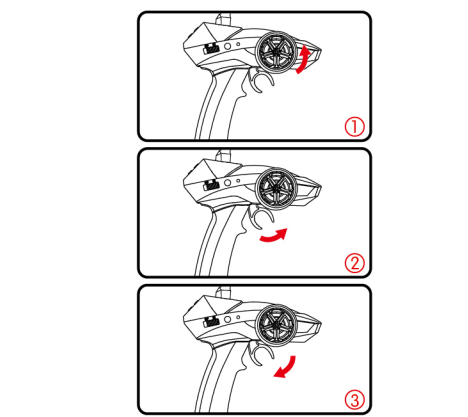
When the RC boat is shipping in the water, toggle the throttle joystick and press the fine-tuning buttons to fine-tune its position.



16

4.180°Flips

Start this operation when the RC boat is shipping in the water. Firstly turn the steering rudder counter-clockwise (shown as figure ①), then toggle the throttle joystick forward for 2 to 3 seconds (shown as figure ②) and lastly toggle the throttle joystick backward for 2 to 3 seconds (shown as figure ③). Repeat the two and the third steps (shown as figure ② and ③) until the RC boat starts to flip. Ensure the steering rudder unchanged as figure ① during the process of two and third steps.



Notes:

When the RC boat is almost out of power, the low voltage alarm would automatically turn on. Please immediately return the RC boat when hearing the alarm otherwise the battery of the RC boat might run out halfway on the return cruise.

17

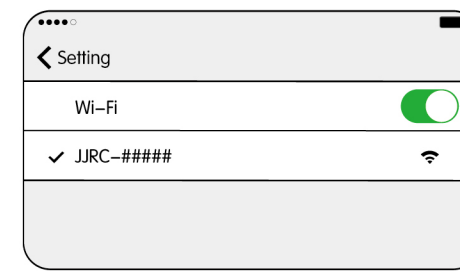
KNOW YOUR REMOTE CONTROL APP

1.Wifi Connection

- ① Use your phone to scan the QR code, download and install the control software: 'JJRC TST'. Android, and iOS are all supported.



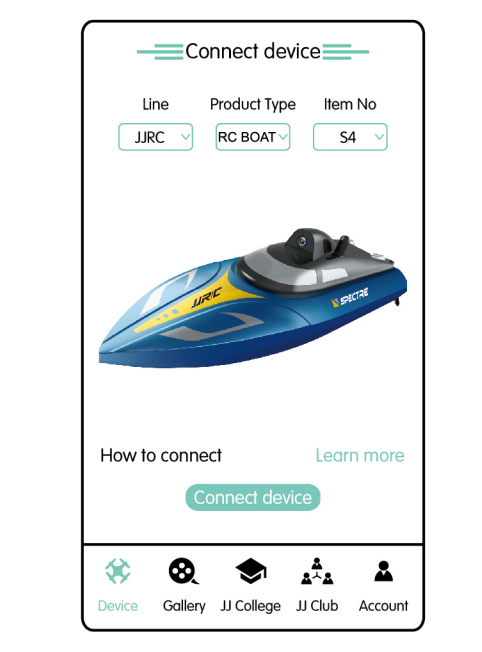
- ② Power on the RC boat. After the light flashes, navigate your smartphone to the settings and select the WiFi network of (JJRC-####) shown as below.



18

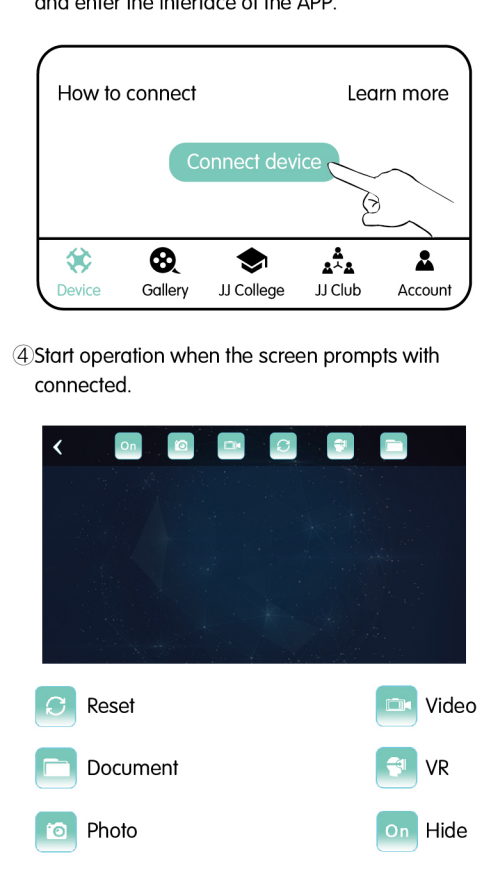
2.Enter JJRC TST Interface

- ① Enter "Account Settings", click "Register" and type in your email address and password for registration.
- ② Log in after the registered email address has been verified.



19

③Click "Connect device" as to connect the RC boat and enter the interface of the APP.



20

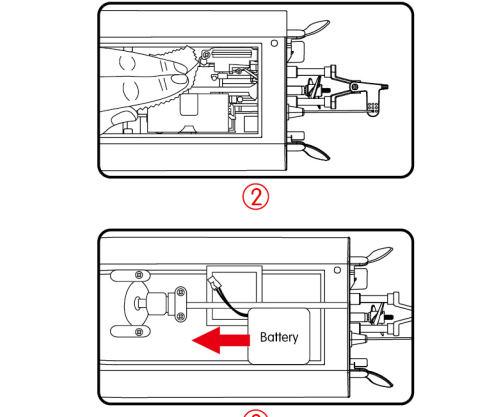
▲IMPORTANT

- This product is not categorized as toys or playthings. It is applicable for users aged 14 and the above. For users under the age of 14, a parent or legal guardian shall company and supervise the child's use of this product at all times.
- Please do not attempt to operate the RC boat via remote control or break off the tail vane when it is still on the ground in case of damage. However, check if the RC boat has been powered on under ground mode.
- Please do not charge batteries, which are not cool down yet.
- Ensure no people in the water before shipping the RC boat otherwise it might cause potential accidents. Be aware if there are any plants, objects or obstacles in the water body, since they might be sucked or caught up in the rotating propellers and cause damages to the RC boat.
- Please operate the RC boat within a range 150 meters in distance in case of control loss.
- This product includes small and tiny components, which might cause suffocation if swallowed. Please do not swallow any included components.
- Please keep distance from the propellers particularly when they are rotating at high speed to avoid injury.
- Please do not touch the motor in operation or soon after it stops to avoid severe burns.
- According to electromagnetic environment requirements for aviation radio (station), this product is strictly prohibited by the airport runway as the center of a circle with radius of 5,000 meters.
- Please do not use this product where and when the radio communication is regulated by the Authority.
- Please inspect the USB cable and other components regularly. If any damages are found, please stop using and restore or replace with a new one.

21

MAINTENANCE

- ① Please remove the batteries when the RC boat is not in use.
- ② Please keep the RC boat in cool place and avoid direct sunlight in case of paint chipping. Clean the surface with a piece of soft dry cloth each time after use.
- ③ Remove the remote control batteries if the RC boat will not be used for a certain period of time in case of battery leakage.



Notes:

Each time after use, drain the water in the cabin with a piece of soft dry cloth and place a bag of desiccant (not included) inside as to keep it dry.

22

JJRC TECHNICAL SUPPORT

Dear Customer,

Thank you for choosing JJRC product. Please visit JJRC official website for more FAQ and information if there is any problem of using our product.

–Product Operation: Please visit JJRC College for tutorial video or user manual.
–Product Features: Please refer to product page description or product brochure.
–After-sale Service: Please refer to conditions and terms of after-sale service.
The final interpretation right belongs to all JJRC.

Should you have any further questions, please visit JJRC Online Feedback and leave your message.

Thank you again for your support!

JIANJIAN TECHNOLOGY CO.,LTD.
www.jjrc.com

23