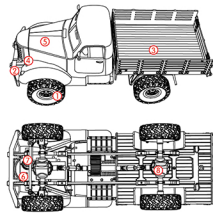


KNOW YOUR TRANSPORTER

TRANSPORTER is an exciting remote control truck. Adopted with 2.4G remote control system, it can be operated through remote control to control functions, such as forward, backward, left and right turn, and accelerating etc. Its 4WD/6WD system provides great grip and strong power supply. Its unique differential and shock absorber help stabilize the car when it is driving, thus bringing a fast and thrilled playing experience. The support of personal DIY is sure to add more fun. For instance, you can replace or upgrade the accessories (such as 17g servo, motorized remote controller) to enhance the product performance.



- ① Tier
- ② Front Bumper
- ③ Trunk
- ④ Light
- ⑤ Battery Compartment
- ⑥ Power Switch
- ⑦ Rudder Fine-tuning
- ⑧ Differential

1

INCLUDED ACCESSORIES

TRANSPORTER-1 Q60/
TRANSPORTER-2 Q61 x1
(Battery Included)

Remote Control x1



USB Charger x1



Phillips Screwdriver x1



User Manual x1

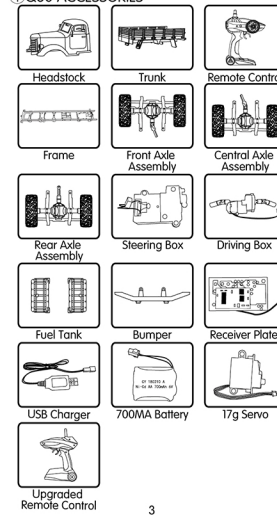
Notes:

Please check the number of accessories carefully (as shown above). Please provide proof of purchase and contact the store for replacement if any missing parts.

2

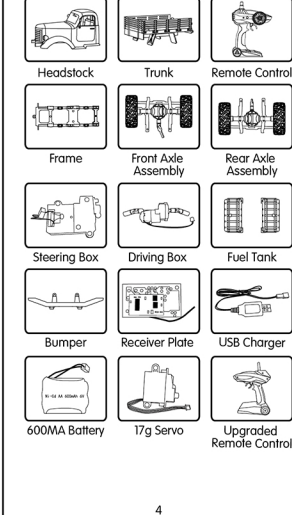
OPTIONAL ACCESSORIES

① Q60 ACCESSORIES



3

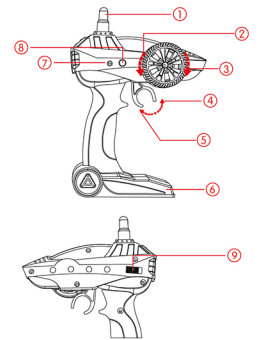
② Q61 ACCESSORIES



4

KNOW YOUR REMOTE CONTROL

1.Remote Control Introduction



- ① Antenna
- ② Turn Left
- ③ Turn Right
- ④ Backward
- ⑤ Forward
- ⑥ Battery Compartment
- ⑦ LED Light
- ⑧ Speed
- ⑨ Power Switch

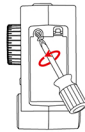
5

Q-Series 2.4G Remote Control Off-road Military Truck

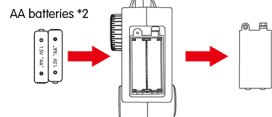
*Please read this manual carefully before operation and keep it properly for future reference.

2.Remote Control Battery Assembly

① Opening Battery Compartment Cover
Open the battery compartment cover with a philips screwdriver.



② Assembling Remote Control Battery



Open the cover of battery compartment, insert two AA batteries (not included).

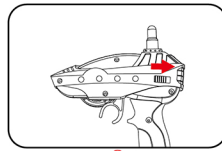
Notes:

- 1. Ensure the polarity symbols on the batteries match the symbols inside the battery compartment.
- 2. Do not mix new and old batteries.
- 3. Do not mix different types of batteries.

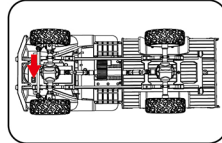
6

3.Pairing the Remote Control with RC Car

- ① Pairing is the process of the remote control receiving the signal delivered by an exclusive ID from the transmitter. However, other radio signals are very likely to disrupt the process of pairing. Therefore, please turn off WiFi or 2.4G enabled devices before the pairing has been successful.
- ② Before pairing the remote control with the RC car, power on the RC car and then switch on the remote control. The light turns red when the pairing has been successful.



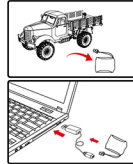
①



②

4.Body Battery Charging

- ① Take the lithium battery out of the battery compartment.
- ② Connect the USB with the adapter. When the red light turns up, connect the lithium battery with USB charging interface, with the positive and negative poles aligned correctly. The red light turns slow flashing when it starts to charge and turns off when the charging completes. It takes about 4-5 hours to charge up to full and gives a playing time of 20 minutes. (Please be noted that the chargeable battery for Q60 is 700mAh, and Q61 600mAh.)
- ③ Insert the lithium battery into the battery compartment with its positive and negative poles aligned correctly and connected with the connectors of the circuit board.



Notes:

- 1. The product is applicable for users aged 8 and the above. For users under the age of 18, a parent or legal guardian shall company and supervise the child's use of this product at all times.
- 2. Great care should be taken when using the electrical appliance. Adhere to safety instructions to avoid electrical shock.
- 3. Please be aware any misbehaved actions would cause problems. Do not disassemble or modify the product.

8

▲ Battery Instructions

- There is a certain risk when using lithium battery. It may cause fire, body injury or property loss. Users must be aware of the risks and take full responsibility of using battery improperly.
- If battery leakage occurs, please avoid contacting your eyes or skin with electrolyte. Once it happens, please wash your eyes with clean water and seek medical care immediately.
- Please remove the plug immediately if you sense any peculiar smell, noise or smog.

Battery Charging

- Please use the charger from original factory to ensure your safe usage.
- Do not charge dilatat or outworn battery.
- Do not over charge battery. Please unplug the charger once fully charged.
- Do not charge the battery next to inflammables, such as carpet, timber floor or wood furniture or on the surface of electro-conductive objects. Please always keep an eye on the battery when charging.
- Do not charge battery which not cool down yet.
- The charging temperature should be between 0°C to 40°C.

Battery Recycling

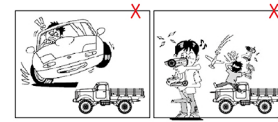
- Do not dispose the battery as daily rubbish. Please familiarize yourself with the local garbage disposal method and dispose it according to the special requirement.

9

OPERATION INSTRUCTIONS

1.Operating Environment

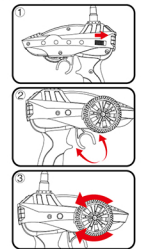
- Do not use in public roads or streets. This might cause accidents.
- Do not use in crowds or animals.
- Do not use in or around ponds or lakes in case the model falls overboard.
- Avoid operating near rivers, ponds or lakes to prevent remote control the car into the water.
- Do not touch the tires in operation.
- Do not use in the rain or let it pass through the water.
- Do not touch the motor in operation until it cools down.
- Please remove the battery from the car and transmitter after the charging cycle completes.



10

2.Operations

- ① Power on the RC truck and then the remote control (see Figure ①). Ensure the remote control's power light turns solid and the RC truck still. Slowly slide the trigger on the remote control (see as figure ②) to control the RC truck to move forward or backward.
- ② Tilt the remote control to turn the RC truck's wheels to left or right (see Figure ③). Then put the RC truck on the ground, stand behind it and squeeze the remote control's trigger to control other functions.



Notes:

Please comply with the following steps at all times to avoid control failure or control loss:

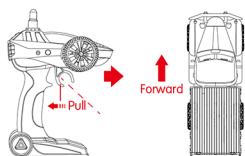
- ① Turn on the receiver.
- ② Power on the RC truck. (Power off the RC truck and turn off the receiver to finish operation.)

11

REMOTE CONTROL DRIVING

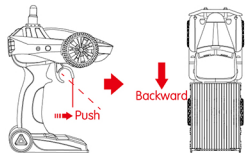
1.Forward

Pull the throttle trigger backward to control the RC truck to move forward.



2.Backward

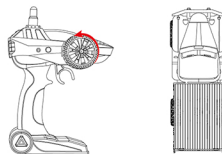
Push the throttle trigger forward to control the RC truck to move backward.



12

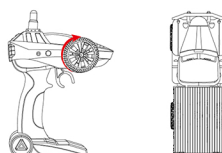
3.Turn Left

Turn the steering to the left to control the RC truck to turn left.



4.Turn Right

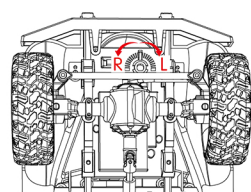
Turn the steering to the right to control the RC truck to turn right.



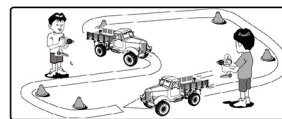
13

5.Fine-tuning

If the RC truck fails to drive straight, please fine-tune its position manually. If the car deviates to the left, turn the fine-tuning to R; if it deviates to the right, turn the fine-tuning to L.



Practise! Choose the area like the tower footing resistance (e.g. bottles) to practise. Try to drive fast on the straight lanes, while slowing down on bends.

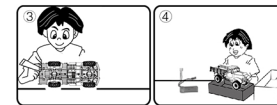


14

MAINTENANCE



Remove the battery from the car when the car is not in use.



Please apply anti-rust oil to the outer metal layer. (Anti-rust oil is not included.)

Store the car and the battery separately when the car is not in use.

15

FAQ

PROBLEMS	CAUSES	SOLUTIONS
Wheels cannot spin	"ON/OFF" not switched on yet.	Slide the power switch to "ON" to power on.
	Low battery capacity.	Replace with new battery or charge the battery.
	Pairing failed.	Please re-pair complying with previous steps.
RC car halts suddenly	Low battery capacity.	Replace with new battery or charge the battery.
Power indicator light of the remote control flashes	Low battery capacity.	Replace with new battery.
RC car slows down	Low battery capacity.	Charge the battery.
Fails to drive in straight line	Fine-tuning mistakes.	Correctly fine-tune the position.

16

JIRC TECHNICAL SUPPORT

Dear Customer,

Thank you for choosing JIRC product. Please visit JIRC official website for more FAQ and information if there is any problem of using our product.

—Product Operation: Please visit JIRC College for tutorial video or user manual.
—Product Features: Please refer to product page description or product brochure.
—After-sale Service: Please refer to conditions and terms of after-sale service.
The final interpretation right belongs to all JIRC.

Should you have any further questions, please visit JIRC Online Feedback and leave your message.

Thank you again for your support!

JIANJIAN TECHNOLOGY CO.,LTD.
www.jirc.com

17